



# In-Grain

*Grain Elevator and Processing Society*

*The Knowledge Resource for the World of Grain Handling Industry Operations*

March 2009  
Volume 29, No. 3

[www.geaps.com](http://www.geaps.com)



**2,089 in St. Louis  
for Exchange 2009**

## GEAPS Leaders Counting Down to March Advisory Council Meeting in Orlando, Fla.

The next meeting of the Grain Company Executive Advisory Council will take place March 28 in Orlando, Fla., and will coincide with the NGFA's 113th annual convention.

The format and agenda of this GCEAC meeting will differ from previous versions. Because several Council members have already attended one of the four prior GCEAC meetings, some executives will be returning to continue their discussion of GEAPS programs and services. As such, the March meeting will have two portions.

The first will be devoted to explaining the purpose of the GCEAC and giving an overview of GEAPS history, activities and mission to first-time attendees. The second portion will comprise in-depth discussion of the relevancy of GEAPS programs and services, additional areas of expertise in which GEAPS can offer training, GEAPS strategic initiatives, promotion of grain operations careers to "next generation" professionals, and interest in core competency certification/credentialing.

GEAPS leaders, including new International President Buzz Tourangeau, will meet with a subset of seven Advisory Council members. GCEAC members confirmed to attend are Tom Bressner (Assumption Cooperative Grain Co), Brian Carleton (Gavilon LLC), Dave Geers (Michigan Ag Commodities), Dave Gordon (Northwest Grain Growers), Richard Willey (Perdue AgriBusiness), Bailey Ragan (Bunge North America) and Roger Fray (West Central). This marks the fifth meeting between GEAPS leaders and the Grain Company Executive Advisory Council.



**Tom Bressner**  
Assumption Cooperative Grain Co

**Brian Carleton**  
Gavilon LLC



**Dave Geers**  
Michigan Ag Commodities

**Dave Gordon**  
Northwest Grain Growers



**Richard Willey**  
Perdue AgriBusiness

**Bailey Ragan**  
Bunge North America



**Roger Fray**  
West Central



# GEAPS

Grain Elevator and Processing Society

<http://www.geaps.com>

4248 Park Glen Rd  
Minneapolis MN 55416 USA  
Phone (00-1) 952-928-4640; Fax (00-1) 952-929-1318  
Email [info@geaps.com](mailto:info@geaps.com)

GEAPS' vision is to be "the knowledge resource" by providing key information in these "core competencies":

- Grain Quality Management
- Grain-Handling Equipment Management
- Handling Systems & Operations Technology Management
- Facility Operations Management
- Agribusiness Environment & Management Practice
- Human Resources Management
- Property & Casualty Risk Management

By providing information relevant to these seven skill sets or knowledge categories, GEAPS aims to meet the needs of grain-industry professionals, and to help them successfully perform their jobs.

## In-Grain

Volume 29, No. 3  
March 2009

In-Grain (ISSN 0746-8008) is published monthly (\$36/year, members; \$48/year, non-members) by the Grain Elevator and Processing Society

Periodicals postage paid at Minneapolis MN.  
POSTMASTER: Send address change to In-Grain, 4248 Park Glen Rd., Minneapolis MN 55416 USA

### GEAPS Staff

**David Krejci**  
Executive Vice President

**Adrienne Fjerstad**  
Manager, Member Services

**Chuck House**  
Manager, Professional Development

**Julia Kloehn**  
Manager, Chapter Services

**Karin Maida**  
Safety Awards

**Amy McGarrigle**  
Manager, Member Services & Information

**Stephanie Nero, editor**  
Manager, Marketing and Communications

**Jason Stones**  
Manager, Member Services and Publications

**Juli Wagner**  
Manager, Administration & Meeting Services



# Exchange 2009



The 80th Annual GEAPS Exchange wrapped up earlier this month in St. Louis, and after eight decades the biggest show in the industry is going strong. Final attendance numbers show that 2,089 industry members came to see the largest Expo in GEAPS history. With 390 booths and 255 exhibitors, GEAPS Exchange 2009 has set a high standard for the organization's future Expos.

But the trade show wasn't the only record-breaker this year. The Exchange 2009 Educational Programming Committee staged the largest educational program ever at a GEAPS Exchange. Over three days, 36 hours of education sessions were put on by over 50 speakers. Quantity and quality went hand in hand, with early feedback saying Exchange 2009 has offered one of the most relevant and popular education programs yet.

As usual, GEAPS Exchange 2009 featured a busy social calendar as well, from the Get-Acquainted Party and Welcome Reception to the President's Banquet and Club GEAPS.

And next year's show in Wichita got off to a strong start in the advance booth sales. One Expo Hall is already sold out, with just 27 spaces remaining in the second, practically guaranteeing another sold-out show.

Here are just a few highlights from GEAPS Exchange 2009. Future newsletters will feature more images from St. Louis. From the Expo and education to networking and social events, a great time was had by all.



## EU Upholds Ban on Biotech Corn MON810

*The Financial Times Ltd*

Efforts by Monsanto to introduce genetically modified maize into the European Union hit a fresh roadblock early this month when member states upheld bans imposed by Austria and Hungary.

The European Commission had pushed them to drop the ban on MON810, a variety of genetically modified (GMO) maize produced by Monsanto, the world's largest seed producer, after its scientific panel determined that it posed no health risk.

Only four states—the UK, Finland, the Netherlands and Sweden—supported the proposal in a vote by environment ministers.

A separate measure to rescind an Austrian ban on a variety of GM maize produced by Germany's Bayer was also defeated by a wide margin.

The votes were a reminder of the right of member states to block GMOs based on safety concerns in spite of repeated findings to the contrary by the European Food Safety Authority.

Environmental groups supported the decision. The vote "is a clear message that European countries will not be bullied into taking unsound decisions regarding their environment, their farming and their citizens' health," said Helen Holder, the GMO coordinator for Friends of the Earth.

But EuropaBio, a GMO lobby group, said

the votes placed public opinion above scientific evidence and would lead to higher food prices. "[This] vote is a political sidestep that goes against the wishes of Europe's farmers who are increasingly demanding the choice to grow biotech crops," said Nathalie Moll, the group's spokesman.

EU member states have allowed the import of GM feed for cattle but their resistance has stiffened over growing GM crops, amid fears they could have unforeseen effects on consumers and the environment. U.S. policymakers and agribusinesses have stated that GM foods are safely cultivated throughout the world.

## Survey Shows Direct Sales to Corn Processors Increasing, Sales to Grain Elevators Declining

*Ethanol Producer Magazine*

The direct sale of Iowa corn from growers to processors, including ethanol plants, has been increasing steadily, while the sale of corn to grain elevators has been declining, according to a study conducted by researchers from Iowa State University and the University of Tennessee.

Meanwhile, grain elevators are shipping more corn to ethanol plants, and they are receiving and shipping more distillers dried grains (DDGs).

The effects of the ethanol industry on the movements of Iowa corn were studied by Chad Hart, an agronomist at Iowa State University, and Tun-Hsiang Yu, an agronomist at the University of Tennessee. They surveyed nearly 5,000 farmers and grain handlers over several months during the 2006-2007 marketing year,

and the data gathered was compared with surveys from previous years. They reported their findings in a paper titled "Impact of Biofuel Industry Expansion on Grain Utilization and Distribution: Preliminary Results of Iowa Grain and Biofuel Survey."

According to the survey, from 2006-2007 Iowa farmers produced 2.05 billion bushels of corn, 62 percent of which was sold to private and cooperative grain elevators. Twenty-seven percent was sold to ethanol plants and other corn processors, which purchased 92 percent of their corn from Iowa sources, all of which was delivered to the processors by truck. In contrast, the 1999-2000 marketing year survey showed that 66 percent of Iowa corn went to elevators, while 13 percent was sold to corn processors, including ethanol plants. The percentage of corn sold to river terminals and farm feeding operations declined.

## Australia's CBH Revises Shipping Allocation System to Relieve Congestion at Export Ports

*World Grain*

WEST PERTH, Australia — The CBH Group announced March 5 that it has implemented a temporary revised shipping allocation system. The revised system has been supported by marketers as a short-term solution to alleviate the current backlog at the State's four port terminals.

Under the new temporary system, marketers will be asked to submit an Expression of

Interest (EOI) in order to book shipping slots to export grain. This is designed to regulate bookings on the shipping stem so that monthly shipping requirements meet the capacity of Western Australia's up-country transport network to bring the grain to port.

CBH said its operations group will continue to work with the industry to overcome the challenges of operating within a network with a limited transport capacity to move the grain to port.

## Mexico to Allow GM Corn Crop Trials

*Digital Journal*

Mexico has changed its laws and will now allow corn growers to apply for permission to produce genetically modified corn on experimental plots.

Farmers and growers will have to apply for governmental permission to grow the GM corn and will only be able to do so on experimental plots. However, the law does not set a limit on how much corn can be grown or where it can be grown. Prior to this change, Mexico had banned GM varieties completely.

Opponents of this change call it the first step toward widespread cultivation of GM corn in Mexico.

The concern is modified corn could contaminate fields and threaten the crop's genetic diversity. There are more than 200 varieties of corn in Mexico.

The Mexican government has not said whether it plans a general legalization of GM corn.



## GEAPS Now Accepting Applications for Reese, Kaufmann Scholarships

### HAROLD REESE MEMORIAL SCHOLARSHIP APPLICATION FORM

The Harold Reese Memorial Scholarship is intended to promote interest in the study of grain-handling operations for career purposes. Any person interested studying grain-handling operations in a post-secondary program may apply. Applicants need not be GEAPS members. Any amounts allocated will be paid directly to the accredited educational institution, for tuition and books only. The application is due by May 1, 2009 at GEAPS, 4248 Park Glen Rd, Minneapolis, Minn. 55416. It may also be e-mailed to [chouse@geaps.com](mailto:chouse@geaps.com); or faxed to (952)929-1318.

Name: \_\_\_\_\_

Address: \_\_\_\_\_

Phone: \_\_\_\_\_ email: \_\_\_\_\_

Employer (if applicable): \_\_\_\_\_

Name of school providing instruction: \_\_\_\_\_

Name, title and phone of advisor at institution: \_\_\_\_\_

Description of courses to be taken: \_\_\_\_\_  
(use separate sheet if necessary)

Date studies will commence: \_\_\_\_\_

Percent of college financing provided by you or your family: \_\_\_\_\_

Your educational background: \_\_\_\_\_  
(use separate sheet if necessary)

On separate sheet, please describe why you are interested in pursuing a grain-handling/operations career, and what your professional goals are. Also please describe any grain industry or related work experience that you may have, as well as your outside interests and activities.

GEAPS is now accepting applications for its yearly scholarships. Two are offered; one is for the study of grain-handling operations, and the other is for foreign languages. Applications are due May 1.

For both Reese and Kaufmann Scholarships, funds will be paid directly to the academic institution with the stipulation that they be used only for tuition and books.

For more information, contact Chuck House at the GEAPS office (952) 928-4640; [chouse@geaps.com](mailto:chouse@geaps.com).

### The Harold Reese Memorial Scholarship

Reese Scholarships are intended to promote interest in the study of grain-handling operations for career purposes. The Reese scholarship will offer assistance to selected applicants pursuing post-secondary programs in grain-handling operations. Both GEAPS members and non-members are welcome to apply.

GEAPS' Executive Committee will review the applications and award scholarships based on qualifications. The scholarship is offered in memory of former GEAPS President and Member of Distinction Harold Reese.

### The Henry H. Kaufmann Memorial Scholarship

The purpose of the Kaufmann scholarship is career enhancement, and funds will be awarded only to full-time agribusiness professionals who want to study a language other than their native one. The scholarships will apply to tuition, books and fees only, at accredited institutions. Students at non-U.S. institutions may apply, but only if their college or university's language program is formally affiliated with an accredited U.S. school.

Selection criteria may include the candidate's commitment to career goals, the case made by the candidate for the proposed course of study and an endorsing letter by the candidate's supervisor. Non-GEAPS members are welcome to apply.

Henry Kaufmann was GEAPS International president in 1975-76 and treasurer for four years thereafter. In 1973, he was named "Member of Distinction."

In conjunction with his widow, Mrs. Marianne Kaufmann, GEAPS will review applications and determine scholarship amounts, based on monies available and individual qualifications.

### HENRY H. KAUFMANN MEMORIAL SCHOLARSHIP APPLICATION FORM

The purpose of the Kaufmann Memorial Scholarship is to provide tuition aid to full-time agribusiness professionals who wish to study a foreign language to enhance their careers. The aid may also cover the costs of books required for the language course. Scholarship applications for the 2008 calendar year will be accepted through May 1, 2009.

Name: \_\_\_\_\_

Address: \_\_\_\_\_

Employer: \_\_\_\_\_

Employer's address: \_\_\_\_\_

Length of service with employer: \_\_\_\_\_ Position: \_\_\_\_\_

Language to be studied: \_\_\_\_\_ Amount of funding requested: \_\_\_\_\_

Name of school or institution providing instruction: \_\_\_\_\_

Date studies will commence: \_\_\_\_\_

In up to 200 words, on a separate paper, please describe your business career to date and explain why you feel that the knowledge of a second language would help you achieve your career goals.

Applications should be mailed to GEAPS, 4248 Park Glen Rd, Minneapolis, MN, 55416. It may also be e-mailed to [chouse@geaps.com](mailto:chouse@geaps.com); or faxed to (952)929-1318.



# Exchange 2009 Sponsors

Thank you to our Exchange 2009 sponsors. We appreciate your generous contribution and your support.



*Education Session  
Refreshment Break  
Wake-Up Station  
Lunch On Us*



*Cyber Center  
Lunch On Us*



*Welcome Reception*



*Education Session  
Refreshment Break  
President's Banquet  
Centerpieces  
Wake-Up Station*



*Education Session  
Refreshment Break  
Expo Grand Opening  
General Cash Donation  
Lunch On Us  
Opening Workshop*



*Welcome Reception*

**G S I G R O U P**



*Lunch On Us  
Opening Workshop  
Club GEAPS  
Idea Exchange  
Refreshments  
General Cash Donation*



*Welcome Reception*



*Club GEAPS  
Education Program  
General Cash  
Donation  
Idea Exchange  
Refreshments  
Leadership Reception  
Lunch On US*



General Mills

*Education Session  
Refreshment Break  
Expo Refreshment  
Break*



*Welcome Reception*



*Welcome Reception*





*Expo Refreshment Break  
Lunch On Us  
General Cash Donation*



*Idea Exchange Refreshments  
Lunch On Us  
Program Book*



*Club GEAPS  
Education Program  
Lunch On Us*



**Buhler Inc**  
*Expo Refreshment Break*

**Chief Agri-Industrial Div**  
*Education Program  
Lunch On Us  
Opening Workshop*

**FWS Group**  
*International Board Refreshments  
Lunch On Us*

**Tapco Inc**  
*Leadership Reception  
Program Book*

**Schlagel Inc**  
*Expo Refreshment Break  
Lunch On Us*

**West Central**  
*Education Program  
General Cash Donation  
Lunch On Us*

**The Essmuller Co**  
*Opening Workshop  
Wake-Up Station*

**Seedbuero Equipment Co**  
*Cyber Center  
Lunch On Us*

**The Exchange Sponsorship "Wall of Fame" in the lobby of America's Center.**

**Thank You Exchange Sponsors**

**5 Stars**

- BROCK**  
Education Session Refreshment Break  
Wake-Up Station  
Lunch On Us
- FRISBIE**  
Education Session Refreshment Break  
President's & Executive Conversations  
Wake-Up Station
- GSD**  
Opening Workshop  
Club GEAPS  
Idea Exchange Refreshments  
General Cash Donation  
Lunch On Us
- g**  
General Mills  
Education Session Refreshment Break  
Expo Refreshment Break
- GRAIN JOURNAL**  
Cyber Center  
Lunch On Us
- HE ROLLER**  
Education Session Refreshment Break  
Lunch On Us  
Opening Workshop  
General Cash Donation  
Lunch On Us
- MillerCoors**  
Welcome Reception
- RICHARDSON**  
Welcome Reception
- Scoutlar**  
Welcome Reception
- ti**  
Welcome Reception
- YTERRA**  
Club GEAPS  
Cyber Center  
Education Program  
General Cash Donation  
Idea Exchange Refreshments  
Leadership Reception  
Lunch On Us
- SALVAGE**  
Welcome Reception

**4 Stars**

- BATTERTON**  
Expo Refreshment Break  
General Cash Donation  
Lunch On Us
- C-TEC**  
Idea Exchange Refreshments  
Lunch On Us  
Program Book
- VAA, LLC**  
Van Sickle, Allen & Associates  
Club GEAPS  
Education Program  
Lunch On Us

**3 Stars**

- Buhler Inc**  
Expo Refreshment Break
- The Essmuller Co**  
Opening Workshop  
Wake-Up Station
- Schlagel Inc**  
Expo Refreshment Break  
Lunch On Us
- Tapco Inc**  
Leadership Reception  
Program Book
- Chief Agri/Industrial Div**  
Opening Workshop  
Education Program  
Lunch On Us
- FWS Group**  
International Board Refreshments  
Lunch On Us
- Seedbuero Equipment Co**  
Cyber Center  
Lunch On Us
- West Central**  
Education Program  
General Cash Donation  
Lunch On Us

**2 Stars**

- Agrex Inc**  
Club GEAPS
- Barton LC**  
Leadership Reception
- Bratney Companies**  
Pre-General Session Break
- ENW Industrial**  
Leadership Reception
- InterSystems**  
Lunch On Us  
Program Book
- RCI**  
Opening Workshop  
General Cash Donation  
Lunch On Us
- Sioux Steel Co**  
Lunch On Us  
Program Book
- Borton LC**  
Leadership Reception
- CHS Inc**  
Education Session Refreshment Break
- Hays Companies**  
Wake-Up Station
- RBH MHI & Elevator Supply Co**  
Cyber Center
- Nationwide Agribusiness**  
Education Session Refreshment Break
- Structural Restoration Inc**  
Idea Exchange Refreshments  
Lunch On Us  
Opening Workshop

**1 Stars**

- Ag Partners LLC**  
Education Program
- Ag Processing Inc**  
Lunch On Us
- AMLESCO**  
Program Book
- Andra Architects**  
General Cash Donation  
Lunch On Us
- Balfour Beatty**  
Program Book
- Canadian Diamic Ltd**  
Opening Workshop
- Corpil Inc**  
Education Program
- Degeach America Inc**  
Program Book
- Elevator Services & Storage Inc**  
Lunch On Us
- Harris Companies**  
General Cash Donation  
Lunch On Us
- Hydro-Mixers**  
Opening Workshop
- Kico Industries Inc**  
General Cash Donation  
Lunch On Us
- McPherson Concrete Storage Systems Inc**  
General Cash Donation  
Lunch On Us
- Corpil Inc**  
Education Program
- Major Leagues**  
Calumet - Penrose
- PMI LLC**  
Lunch On Us
- Sheltonweggen Inc**  
Program Book
- Trench, Inc**  
General Cash Donation  
Lunch On Us
- Union Iron Works**  
Expo Grand Opening  
Program Book
- Younglove Construction, L.L.C.**  
Program Book

**Lunch On Us**

- 4B Components Ltd**
- Ag Processing Inc**
- Andco Actuators**
- Batterton Waterproofing**
- Brock Grain Systems**
- Caltrans**
- Chief Agri/Industrial Div**
- Comco Mfg**
- Control Stuff Inc**
- Crippen Northland Superior Supply Co**
- C-TEC**
- Donaldson Terit**
- Elevator Services & Storage Inc**
- Flexco**
- FWS Group**
- Brain Journal**
- GSI Group**
- HI Roller Conveyors**
- Hoffmann Inc**
- Integra Plastics Inc**
- InterSystems**
- Kico Industries Inc**
- Kings Valley Industries**
- McPherson Concrete Storage Systems**
- Hard-Son Metals**
- Pesticon Systems Inc**
- PMI LLC**
- RCI**
- Schlagel Inc**
- Seedbuero Equipment Co**
- Sioux Steel Co**
- Structural Restoration Inc**
- Sudenga Industries Inc**
- Sukup Mfg Co**
- Trackmobile Inc**
- Tramco**
- Van Sickle, Allen & Associates**
- Viterra Inc**
- West Central**

# Exchange 2009 Sponsors



**Agrex Inc**  
Club GEAPS

**EMW Industrial**  
Leadership Reception



**Nationwide Agribusiness**  
Education Session Refreshment  
Break

**Sioux Steel Co**  
Lunch On Us  
Program Book

**Borton LC**  
Leadership Reception

**Hays Companies**  
Wake-Up Station

**RBH Mill & Elevator Supply Co**  
Cyber Center

**Structural Restoration Inc**  
Idea Exchange Refreshments  
Lunch On Us  
Opening Workshop

**Bratney Companies**  
Pre-General Session Break

**InterSystems**  
Lunch On Us  
Program Book

**RCI**  
Opening Workshop  
Lunch On Us  
General Cash Donation

**CHS Inc**  
Education Session Refreshment  
Break

**Ag Partners LLC**  
Education Program

**Canadian Dionic Ltd**  
Opening Workshop



**Hydro-Klean Inc**  
Opening Workshop

**Shuttlewagon Inc**  
Program Book

**Ag Processing Inc**  
Lunch On Us

**Cargill Inc**  
Education Program

**Kice Industries Inc**  
General Cash Donation  
Lunch On Us

**Tramco Inc**  
General Cash Donation  
Lunch On Us

**AIRLANCO**  
Program Book

**Degesch America Inc**  
Program Book

**McPherson Concrete Storage  
Systems Inc**  
General Cash Donation  
Lunch On Us

**Union Iron Works**  
Expo Grand Opening

**Andco Actuators**  
General Cash Donation  
Lunch On Us

**Elevator Services & Storage Inc**  
Lunch On Us

**PMI LLC**  
Lunch On Us

**Younglove Construction LLC**  
Program Book

**Bailey-Parks Urethane**  
Program Book

**Harris Companies**  
General Cash Donation

## "Lunch On Us" Sponsors



4B Components Ltd  
Ag Processing Inc  
Andco Actuators\*  
Batterton Waterproofing\*  
Brock Grain Systems\*  
Calbrandt  
Chief Agri-Industrial Div\*  
Comco Mfg  
Control Stuff Inc  
Crippen Northland Superior Supply Co  
C-TEC\*  
Donaldson Torit  
Elevator Services & Storage Inc\*

Flexco  
FWS Group\*  
GSI Group\*  
Grain Journal\*  
Hi Roller Conveyors\*  
Hoffmann Inc  
Integra Plastics Inc  
InterSystems\*  
Kice Industries Inc\*  
Kings Valley Industries  
McPherson Concrete Storage Systems\*  
Nord-Sen Metals  
Pestcon Systems Inc

PMI LLC\*  
RCI\*  
Schlagel Inc\*  
Seedburo Equipment Co\*  
Sioux Steel Co\*  
Structural Restoration Inc\*  
Sudenga Industries Inc  
Sukup Mfg Co  
Trackmobile Inc  
Tramco\*  
Van Sickle, Allen & Associates\*  
Viterra Inc\*  
West Central\*

\*Indicates Star Sponsors

**Major  
League  
Sponsor**

Calumet - Penreco







## GEAPS Presents Industry Leader Award to USDA's David Shipman

GEAPS presented the organization's highest individual award, the Industry Leader Award, March 3 at the President's Banquet at Exchange 2009 in St. Louis. From many deserving candidates, GEAPS leaders selected as the winner David R. Shipman of the United States Department of Agriculture's Agricultural Marketing Service.

Shipman was nominated for outstanding contributions to the leadership and management of the nation's grain inspection and weighing system during his 30-plus years with the U.S. Department of Agriculture. The Industry Leader Award is given to an individual—GEAPS member or not—who provides extraordinary service to the grain operations industry.

Shipman served as Deputy Administrator for USDA's Grain Inspection, Packers and Stockyards Administration from 1994-2008. He worked with the grain industry to establish quality standards and deliver independent third party inspection services, and provided technical support to address non-tariff trade barriers and facilitate the marketing of agricultural products around the world.

Shipman's work with the U.S. grain industry cut costs by improving efficiency. He helped resolve complaints from foreign buyers and opened market opportunities, and helped prepare the agency for market changes resulting from biotechnology.

Shipman has also made an exceptional commitment to leadership in ensuring that

the Federal Grain Inspection Service continues to meet the changing demands of the marketplace. He worked to make sure that FGIS used all available technology, resources, and information to bring new and innovative services and tests to the market. Shipman's actions have ensured the continued delivery of the high quality U.S. grains and oilseeds in a constantly changing industry. He helped to strengthen markets for U.S. grain and related products. His work with electronic government initiatives revolutionized FGIS' business operations.

Currently, Shipman is the Associate Administrator of the Agricultural Marketing Service at the United States Department of Agriculture. He is responsible for a wide range of programs that facilitate the domestic and international marketing of U.S. agricultural products.

Under Shipman's direction, the USDA establishes quality standards and delivers grading services for meat, poultry, eggs, vegetables, cotton, and a variety of other products. A national team of federal and state market reporters work under his direction to report daily commodity prices used by those selling and buying commodities every day. He also oversees the operation of industry-funded research and promotion programs, such as the Dairy Board's "Got Milk" campaign.

More recently, Shipman has been actively engaged in implementing a variety of the 2008 Farm Bill provisions, including a number of



David Shipman

expanded grant programs to support farmer conversion to organic operations and to promote the marketing of specialty crops. He has also directed the implementation of the Farm Bill required Country of Origin Labeling of food.

Shipman is also responsible for the purchase of over a billion dollars of agricultural products annually for the School Lunch Program and a variety of other Federal food assistance programs.

Shipman has been recognized for his contribution to the U.S. Government and American Agriculture by former presidents Bill Clinton and George W. Bush with the President's distinguished service awards.

## Chapters, Members Receive Awards at GEAPS Exchange 2009

GEAPS chapters and chapter leaders were recognized for outstanding contributions to the organization March 3 at the GEAPS annual meeting at Exchange 2009 in St. Louis.

At the meeting, International Board Chair Mark Daniels of the *Minneapolis Chapter* presented the Chapter of Distinction Award to the *Columbia River Chapter*, which posted a

net membership gain of 4 percent in 2008 and retained 90 percent of its existing membership. The Chapter of Distinction Award is given each year to the GEAPS chapter that not only has the highest retention rate of all chapters in the U.S. and Canada but also posts a membership gain during that year. *Columbia River* President Randy Cooper accepted the award on behalf of his chapter.

Daniels recognized 18 other GEAPS chapters for membership gains last year as well. They are: *Siouxland Chapter*, up one percent; *Intermountain*, up two percent; *Michigan-Southern Ontario*, up three percent; *Canadian Prairies*, up four percent; *Cherokee Strip*, up five percent; *Kansas City*, up five percent; *Seaway*, up five

percent; *Mid-South*, up six percent; *Gateway*, up six percent; *Mid-Atlantic*, up six percent; *Greater Iowa*, up six percent; *Inland Empire*, up six percent; *Cornbelt*, up eight percent; *Minneapolis*, up nine percent; *Gulf South*, up thirteen percent; *Greater Nebraska*, up fifteen percent; *Vancouver*, up fifteen percent; *Mid-America*, up thirty-six percent.

Additionally, Daniels presented the Chapter Member of Distinction Award to eight individual members for their extraordinary skill and work at the chapter level. Receiving Chapter Member of Distinction Awards were:

- Julie Bell, *Greater Iowa*
- Ryk DeGoey, *Greater Iowa*
- Mark Gaunt, *Greater Iowa*
- Bill Jefferson, *Mid-Atlantic*
- Steve McClintock, *Inland Empire*
- Jim Rossman, *Hoosier*
- Greg Van Sickle, *North Iowa*
- Benny Vanderwende, *Mid-Atlantic*



*Columbia River* President Randy Cooper (left) accepts the chapter cup from 2008-2009 International President Mark Daniels.



# President's Report



**Mark Daniels**  
**GEAPS International President**  
**2008-2009**

*Mark Daniels, GEAPS 2008-2009 International President, delivered his president's report during the GEAPS Annual Meeting, March 3 at the 80th Annual GEAPS Exchange in St. Louis.*

2008 was a year to be remembered by many, for a long time to come. We saw volatile swings in our financial, commodities, transportation and real estate markets. With the election year, we heard campaign promises from local, state, and national politicians on matters of energy independence, international trade, global warming, national deficit, and more.

As your GEAPS president it has been my pleasure and privilege to serve the organization during these challenging times. With your help much has been accomplished this past year—including Exchange 2009, which has broken records with the largest expo and educational program we've offered in the 80-year history of the GEAPS Exchange. This sets a platinum standard for years to come, particularly when one considers the current economic environment. This report will offer a snapshot of some of those accomplishments in the year leading up to this Exchange, as well as touch on a few ongoing challenges.

Before I launch into the report, however, let me first take a minute to say "thanks." It has been a humbling experience to work side by side with such a dedicated group of volunteer

leaders and staff. On many occasions I found myself marveling at all the work products that the organization is involved with, and how professional they are, and how they all seem to happen with a limited budget and tight timetable. The only explanation I could come up with, time and again, is that people are passionate about GEAPS.

And rightfully so. The GEAPS organization has stood the test of time largely because it is a member driven organization. GEAPS' members have long since recognized that there are no "islands" in the grain industry. We are all interconnected at various levels such as facility, efficiency, grain quality management, safety, security and environmental stewardship, to name just a few.

So who is in a better position to connect members with members? To create a platform for disseminating knowledge in a non-competitive, non-threatening atmosphere? The short answer is no one. Our educational programming committee, for example, is the largest GEAPS standing committee. You the members decide what is important, what is timely, what information needs to be shared and with whom.

The GEAPS mantra is to be "the knowledge resource of the world of grain handling industry operations." You are the foundation of this knowledge. Without members willing

to share knowledge with other members, GEAPS doesn't exist. And that mission to be the knowledge resource for the industry was evident in all of the programs and services our members helped plan and execute this year.

So to all the volunteers who find the time to mentor, to coach, to teach, to lead, I extend a heartfelt and enthusiastic "thank you!"

Now on with the report.

## **Distance Education Growing**

I'll start off with one of our most quickly growing programs. Unlike the baseball field in Iowa referred to in "Field of Dreams," where you build it and hope they will come, several years ago GEAPS leaders had the vision to build a distance education program so the people could stay exactly where they are. Students anywhere in the world can participate in online grain and processing related educational classes developed by the very best in the industry. GEAPS, in collaboration with Purdue University and more recently Kansas State University, has developed courses that support core competencies in our industry. So far about 450 individuals from 9 countries have taken advantage of these courses. In 2009, we are expanding our distance education offerings with the development of new courses including Aeration System Design, Electrical Safety, and a Federal Grain Inspection Service





With Jerry Gibson at a Minneapolis Chapter tour of the Mississippi River in May 2008.

Grain Inspection course done in collaboration with the U.S. Department of Agriculture's Grain Inspection, Packers and Stockyards Administration.

And in an excellent example of international participation in our programs, a Spanish-language version of "Quality Grain Management" was offered last year in Argentina. The course, which ran from October to November, was translated and adapted by APOSGRAN, a GEAPS-like organization in Argentina. This translation is an excellent reminder of the scope of our industry, and of GEAPS' international membership and reach.

On behalf of GEAPS, I would like to extend a public "thank you" to Dirk Maier of KSU, John Sharpe and Randall Jones of GIPSA, and Roberto Hajnal from APOSGRAN, as well as our Distance Education Program Oversight Committee and its chair, Mike Kiel, and all the volunteer instructors for their efforts in supporting GEAPS' success in distance education. The quality of our distance education opportunities is a testament to how hard you've worked in every step of the process.

## Exchange 2009 Education Program

Continuing the theme of education, I'd like to mention the superb program that was offered this year at the Exchange, and express my sincere thanks toward our Educational Programming Committee and its chair Kathy Reading.

The longstanding reputation of quality educational programs that GEAPS enjoys is the direct result of this EPC group. The Exchange 2009 educational program featured over 50 speakers and 36 hours of focused presentations—even more hours than last year's record-setting show in Omaha. The EPC does a great job of focusing on converting GEAPS' "knowledge resource" mantra into an action plan.

My thanks go out to the EPC for their hard work. From the sessions to the pods, the Opening Workshop to the Idea Exchange, they did a terrific job.

## The Next Generation

In 2008, GEAPS took a look forward to the future of our organization. With this view toward the future, we've had to ask ourselves some tough questions. What will GEAPS look like 5-10 years from now? Are there things we should be doing today to meet the challenges of tomorrow? How does GEAPS sustain itself on the backside of the baby boom cycle?

To address these questions, the theme of the 2008 GEAPS Leadership Conference was "How does GEAPS attract and retain the next generation of industry leaders?" To help answer the question, we went straight to the source and held a focus group of young industry professionals.

We invited this group of young people to the conference and spent a few hours talking with them about their thoughts on next generation involvement. They gave their input on subjects such as the value of chapter meetings and the benefits of GEAPS membership. They suggested making mentorship of new employees a priority and giving GEAPS a stronger, more user-friendly online presence. And they also made some predictions about what they think will be major industry trends in the near future. It was very enlightening to see GEAPS through their eyes.

So as part of our next generation efforts, GEAPS is bringing new members to our organization through our new free student memberships program. While student members are a small percentage of our overall membership, a recent uptick in student registrations represents, in a meaningful way, increased interest in GEAPS among students.

We're also delivering the user-friendly online presence they spoke about. In the coming weeks, you'll see a relaunching of the GEAPS Web site, which will offer sections tailored to young people and their needs for information, networking, and employment search assistance.

In addition to the focus group, the other

With IAOM President Royal Denning at the GEAPS/IAOM Great Lakes Regional Conference in April 2008.



components of the Leadership Conference were the Leadership Forum and Chapter Leader Workshop.

In the Forum, GEAPS leaders looked forward and devised strategies for taking GEAPS into the future. In the Chapter Leader Workshop, chapter leaders learned to use new technologies, like Webinars, in a session called "The Chapter Meeting of Tomorrow." It is our hope that using these technologies, in addition to our next generation recruiting efforts, will help us as we continue to think critically about how GEAPS can best package and present the comprehensive knowledge it possesses through and to its members.

Chapters have also been reaching out to students on a smaller scale. Recently the *Great Plains*, *North Iowa* and *Minneapolis* chapters have reached out to local schools, invited students to meetings and helped them learn the benefits of GEAPS.

This issue received attention at the Exchange, as well, with recruiting the next generation as the topic of our Chapter Leader Workshop, presented by the Chapter Resource Committee and Chair Ron Demaray.

I encourage you to reach out to any young people you know who might be interested. Do you know any students who could benefit from the networking and educational opportunities GEAPS offers? Invite them to become GEAPS members—on the house.

## The Importance of Safety

GEAPS works in collaboration with the National Grain & Feed Association to promote safety as well. As you are likely aware, the annual Operations, Management & Technology conference features one and a half days of safety, environmental, and security-related information every other year, and has since 1998. In the alternate years, the focus is on grain quality management with the program developed by our Grain Grades and Weights Committee, led by Tim Paurus.

In addition, GEAPS and the NGFA will release this summer a grain operations safety





At the JORNATEC conference in Argentina, August 2008.

orientation training video that will make an excellent addition to your training library. That program will provide an overview of everyday safety and health hazards as well as suggestions for controlling them.

And each year at the Exchange, the GEAPS-NGFA Safety, Health and Environmental Quality Committee, chaired by Kevin Danner, presents safety awards to those facilities that were successful in completing a year without a lost-time injury or illness. GEAPS' dedication to safety at the Exchange doesn't end there. Many of the education sessions this year focused on safety. For example, the Opening Workshop's focus on grain engulfment not only described what can happen in a grain bin, but how you should be prepared to respond if it does. We had the privilege of hearing from some survivors of engulfment and lessons they have taken from the experience. They were given a second chance; not everyone is.

## Marketing our Strengths

Several years ago GEAPS initiated a dialogue with the grain and processing industries' top executives. The objective of this campaign is to ensure that these executive level managers are familiar with GEAPS, and how their organization may take advantage of all our opportunities.

Our dialogue with senior grain company executives has confirmed what you suspected. GEAPS is seen as an excellent source of practical safety knowledge that supports operations managers in their efforts to ensure their employees leave work in the same condition they arrived. Our distance education program receives positive feedback, and GEAPS mem-

bership, and all the networking opportunities that come with it, is viewed as an investment with very good returns.

Now each month we send out an e-newsletter to these executives, and new this year, we sent all executives we are in contact with customized annual reports detailing GEAPS involvement within their companies. They now have high level summary information which profiles their employees' GEAPS involvement. Included in this executive report is a newly developed "GEAPS Annual Highlights" summary to show the best of what we offered in the previous year.

## APOSGRAN Visit

In addition to our strong Canadian contingency, GEAPS continues to advance our International presence. Perhaps the highlight of my tenure as GEAPS president was my trip to Argentina. It was a great honor and privilege to represent GEAPS during the annual JORNATEC conference and trade show, produced by APOSGRAN in Rosario, Argentina.

At the conference, I delivered a safety presentation with real-time translation before a Spanish-speaking audience. I also had

the opportunity to visit a grain export facility on the Parana River and meet with APOSGRAN leaders to discuss collaboration on projects like distance education. GEAPS and APOSGRAN have a strong history of collaboration and mutual learning, and I am optimistic that our working relationship will continue to bring value on both sides of the equator.

## Maximizing Resources

Next allow me to talk briefly about GEAPS' financial status. While I am pleased to report GEAPS' balance sheet is strong, I would also report that 2008 was a difficult year for GEAPS. In spite of our record revenues and expenses that were under budget, we still experienced a net loss. The GEAPS strategic reserve fund that has sustained us through tough times took a hit last year. And while we are far from crisis mode, we do need to be prudent and monitor our expenses accordingly—something we've gotten off to a good start with thanks to the Executive Committee's budget development work led by our treasurer, Tim Sullivan, who provided us with an in-depth analysis of our financial situation in his treasurer's report last December. As we continue to be mindful of our financial situation, looking ahead you will still see the great products and services GEAPS is known for, but they might be packaged or presented differently to make efficient and sensible use of our resources. And your board will continue to ensure that member value is at the forefront of every decision we contemplate.

In conclusion I would like to say "thanks." My experiences this year have been gratifying, and made more so by seeing the dedication GEAPS volunteers have for the organization. Thank you for all of your contributions.



## A View to the Year Ahead

*Buzz Tourangeau, GEAPS 2009-2010 International President, delivered his acceptance speech to the GEAPS presidency during GEAPS' Annual Meeting, March 3 at Exchange 2009 in St. Louis*

It is with great pleasure that I look forward to my term as GEAPS President. Most of you recognize me as a membership recruiter and in the last few years as a GEAPS jacket and watch salesman. That is a jacket and watch that I wear with much pride. Since 1971—for more than 35 years—I have been involved in various aspects of grain and processing operations. In 1984 I was introduced to GEAPS by our 56th President, Richard “Red” Geurts. Red brought me to my first chapter meeting in Minneapolis, and in 1988 I became a GEAPS member.

And for over 20 years now, GEAPS has been my “go-to” source for technical information and contacts related to the grain and processing as well as allied industries. Over the years, perhaps just like many of you may have done, I have called on my fellow GEAPS members with questions, issues, or just to have a sounding board. I can honestly say I can't remember a single time when they have not accepted my call, and offered their advice or information. No other organization duplicates the kind of member networking available to those of us in GEAPS.

My leadership experience comes from as far back as playing hockey and football in high school. After high school I played Junior A hockey and I was captain of our team. Being captain is a lot like being a leader in the business world. You need to pass the puck and make plays as a team. You recognize that your team is made up of individual members with various strengths and weaknesses. As captain, you quickly recognize that your team chemistry and cohesion ultimately determines your effectiveness. Talented individuals playing independently rarely prevail over an organized and unselfish team. We won many games because we played as a team, winning largely because we recognized all team members had a contribution to make.

I view the GEAPS organization as a team of members with a common goal of fulfilling the GEAPS purpose—helping create industry leadership, innovation and excellence. That's our core purpose, and it guides our efforts to become the grain handling industry's knowledge resource. Within our membership we do a good job of working to execute this vision and mission. If we lose that focus, then we become just a social club.

During the Daniels administration, GEAPS as an organization has continued to make a lot of progress. My challenge is to keep the focus, direction and the momentum going. To do so requires that I challenge each member to



participate in the process. Please step forward; there is no better venue than GEAPS.

It is also true that GEAPS as an organization faces many challenges as it continues to evolve over time. The one constant is that GEAPS is a “member driven organization.” This is one of our biggest challenges, but also our biggest strength. “Member-driven organization” is a term you have heard many times, but sometimes members are unsure of what that really means. What it means is that every decision on policies, priorities, operating decisions, budget, etc., are made by volunteer members—not staff.

If you doubt that statement or want to see the proof, I would invite you to attend a Board of Directors meeting. The board and all other GEAPS leadership meetings are open to all members. I would encourage and offer an open invitation to all our members to attend.

Our members are interested in the goals and priorities for 2009. Our newly elected U.S. president and administration have goals and priorities—global issues, national budget concerns, trade deficits, and restoring world peace. Our goals and priorities are on a smaller scale, but they are significant for our industry. We, too, need to be aware of the larger issues and our strategic direction, as well as our available resources. While I can't promise world peace, I am committed to making sure that our members are satisfied with how GEAPS invests the resources you entrust to its leaders and the relevance and value of what we produce with them.

My goals and priorities include maintaining a workable budget that allows us to fund our programs while ensuring our sustainability, and a focus on our knowledge resources, like our educational programs, as well as membership. My passion for GEAPS is right where my roots started—members.

I want to stay focused on GEAPS member-

ship recruiting, and answering the question of where our future members—and member leaders—will come from. I want to continue the strong tradition of linking members to members through newsletters, online information, chapter meetings, committees, conference calls, regional conferences, distance education learning, seminars, membership directories, as well as our international technical conference and exposition. Each of these exist for the sole purpose of facilitating the exchange of information that enables all of us to perform our jobs in an efficient manner, and our associate members with an opportunity to better service their customers by seeing their needs first hand.

While these things have been and remain top priority, today GEAPS faces some tough decisions concerning our desire to provide our members with all these forums and our ability to meet the financial obligation associated with each. In our desire to link members to members, we have stretched the capacity of our resources—of our volunteer leaders, staff and treasury. As a group, the International Board and Executive Committee have some tough decisions to make in the coming year about how to best ensure that member access to quality programs and services is not compromised within the limits of our available resources. I am confident that the quality of the services GEAPS members have come to expect will not be compromised; however, we need to be adaptive, adjusting and making changes when necessary.

My gratitude goes out to all our members at the individual, chapter, regional, committee, and international levels, and to all the volunteers that dedicate their time, their knowledge and their experience, which provides a valuable asset assuring GEAPS future success. To all of you I simply would like to say “thank you.” Everyone makes a difference.



# Chapter Leader Workshop

## Recruiting the Next Generation

The Chapter Leader Workshop at this year's GEAPS Exchange featured a panel discussion with four of GEAPS' finest volunteers who have hands-on experience in building relationships between chapters and schools or universities.

The Workshop began with a welcome address by GEAPS 2008-2009 Intl President Mark Daniels and 2008-2009 Intl First VP Buzz Tourangeau. Dave Healey and Mark Avery of the Chapter Resource Committee moderated the session. Panelists included Dirk Maier, Department Head – Grain Science & Industry, Kansas State University, *Great Plains Chapter*; Greg Van Sickle, Secretary/Treasurer, *North Iowa*; Kent Mellen, President, *Minneapolis*; and John Tuttle, President, *Greater Iowa*.

Panelists shared information about what their respective chapters are working on including:

- Experience with student presentations on campus and experience in getting students to attend chapter meetings
- Conversations with school administrators and faculty about what GEAPS is and how/why student can get involved. Also the importance of faculty buy-in to get access to students
- Revamped chapter scholarship programs as well as internship involvement
- Chapter goals/vision for what a chapter-school partnership will look like
- Who to contact at schools to begin building relationships
- Approaching students to recruit new talent into the industry



# Student Day

## Nineteen Students Attend Exchange to Experience GEAPS, Industry

Student Day at GEAPS Exchange 2009 was Monday, March 2, and by all accounts was a successful program for both students and veteran GEAP-ers. Nineteen feed science, agricultural engineering and grain science students from Kansas State University and the University of Missouri attended along with faculty from their schools to take part in the event. Dr. Keith Behnke, Professor of Feed Science at Kansas State University, brought 9 students; Dr. Joseph Zulovich, Professor and Extension Agricultural Engineer at University of Missouri, brought 10 students; and Dr. Dirk Maier of Kansas State University and the GEAPS-KSU Distance Education Program was also in attendance.

The student group attended a special session, produced by the GEAPS Membership Committee, targeted at their needs as emerging professionals in the grain handling and processing industry. Membership committee Chair Bill Jefferson, Sales Representative for Messick & Gray, Inc, Bridgeville, Del., welcomed students and made opening remarks to the session. Five GEAPS members made presentations:

• Angela Field, National Marketing Manager, Applied Power Products, St. Paul, Minn., discussed working within the grain industry from

the perspective of a leg and conveyor belting supplier.

• Greg Rowe, Director of Operations, Perdue Agribusiness, Salisbury, Md. His presentation covered the key elements of finding the area that works for you within the various branches that make up the grain industry.

• Don Brucker, Plant Operation Manager, The Andersons, Champaign, Ill., and GEAPS International Past President 1990-1991, covered working his way up through The Andersons and GEAPS over the past 30+ years.

• Roger Dowdy, General Manager of Operations, Consolidated Grain & Barge Co, Wayne City, Ill., and GEAPS International Past President 2003-2004, covered his path through the Grain Industry, focusing on the importance of working hard, but always remembering to have fun at the same time.

• Nathan Cook, Drier Manager, Riceland Foods, Inc, Tuckerman, Ark., outlined the path his career has taken with Riceland since his graduation from college in 2002, and noted how his membership with GEAPS shortly after beginning his career had a direct positive effect.

All presenters discussed how their education, experience and GEAPS involvement played a part in their successful careers in the agribusiness industry.

Closing remarks were made by GEAPS International First Vice President and Membership Committee member Rick Krier.

Following the session, five Membership Committee volunteers led students on small-group tours of the Expo Hall to learn about equipment, become familiar with the industry's largest trade show and experience first-hand the networking opportunities GEAPS offers.



# 2008-2009 LEADERSHIP

While standing on stage at the Annual Meeting at Exchange 2009, I took a few moments to name our standing committees and their leaders, and to recognize the hard work these volunteers do on behalf of GEAPS. Without the volunteer leaders of these committees GEAPS would be an organization with a lot of great ideas, but no way to make them happen. These committees are the gears that drive the momentum within the organization.

So it's time to give credit where credit is due to these outstanding committees and what they accomplish. In these next few pages, you'll get a detailed description of the work each committee does, as well as the members that make it happen. If you've ever participated in a GEAPS program, you've benefited from the work of these individuals. Virtually every educational opportunity GEAPS provides bears the fingerprints of a volunteer work group. Things like distance education, the pods at GEAPS Exchange, bin rescue training classes, speakers at chapter meetings, the Grain Company Executive Advisory Council, the Operations Management and Technology workshops, etc., would not exist without these committed volunteers.

So please take a few minutes to review this summary of those committees and those individuals that make all the difference for GEAPS. And if your name is on this list, please accept my gratitude for your efforts and your results!

— **Mark Daniels**

*GEAPS International President 2008-2009*

recognizing  
our  
outstanding  
volunteer  
leaders



## International Committees and Councils

### International 2008-2009 Board of Directors

The International Board is responsible for the development, evolution and implementation of GEAPS' Strategic Plan. The International Board directs and oversees pursuit of GEAPS' Mission—the development and delivery of programs and services that anticipate and respond to the needs of GEAPS' members. International officers are the principal stewards of GEAPS assets and resources.

#### International Officers

**Mark Daniels**, *President*  
**Buzz Tourangeau**, *First Vice Pres*  
**Rick Krier**, *Second Vice Pres*  
**Slawomir Waplak**, *Third Vice Pres*  
**Tim Sullivan**, *Treasurer*  
**Tom Price**, *Board Chair*  
**David Krejci**, *Secretary, Executive Vice President*

CHS Inc  
 West Central  
 Western Iowa Cooperative  
 Viterra Inc  
 West Central  
 Richardson International Ltd  
 The Harrington Co

Minneapolis  
 Greater Iowa  
 Siouxland  
 Canadian Prairies  
 Greater Iowa  
 Canadian Prairies  
 GEAPS staff

#### International Directors

Jeffrey Caskey (term ends 2011)  
 Chad Cook (2011)  
 Mark Fedje (2010)  
 Stephen Ginter (2009)  
 Craig Jones (2010)  
 Gary Kearn (2009)  
 Ben Lackey (2010)  
 Bill Lyster (2010)  
 Tracy Peterson (2009)  
 Gregory Rowe (2009)  
 Steve Schmitt (2011)  
 Stephen Tillery (2010)

The Scoular Co  
 Deseret Grain Storage  
 General Mills Inc  
 Chief Agri-Industrial Div  
 Tramco Inc  
 The Scoular Co  
 Riceland Foods Inc  
 Ag Partners LLC  
 DeBruce Grain Inc  
 Perdue AgriBusiness  
 TE Ibberson  
 Attebury Grain Inc

Intermountain  
 Intermountain  
 Minneapolis  
 Greater Nebraska  
 Great Plains  
 Great Plains  
 Mid-South  
 Greater Iowa  
 Greater Nebraska  
 Mid-Atlantic  
 Minneapolis  
 Tri-State

### Associates 2008-2009 Board of Directors

The Associates Board, as elected by GEAPS Associate members, represents the interests of Associate members in the pursuit of GEAPS mission through the achievements of the general objectives.

**Stephen Ginter**, *President*  
**Craig Jones**, *Vice President*  
**Steve Schmitt**, *Secretary*  
**Robert Schutte**, *Ex Officio (Immediate Past President)*

Scott Chant (2009)  
 David Drake (2010)  
 Bo Fisher (2010)  
 Gary Geist (2009)  
 Deborah Good (2010)  
 Jeany Hesse (2008)  
 Tom Pruess (2011)  
 Kathy Reading (2010)  
 Jim Rogers (2011)  
 Gary Vaughn (2009)  
 Dan Vis (2011)  
 Ray Vrtiska (2009)

Chief Agri-Industrial Div  
 Tramco Inc  
 TE Ibberson  
 United Oil

Safe-Grain/Maxi-Tronic Inc  
 Drake Inc  
 Maxi-Lift/Dura-Buket  
 Kings Valley Industries  
 Brock Grain Systems  
 Integra Plastics Inc  
 RBH Mill & Elevator Supply  
 Seedburo Equipment Co  
 WAM Inc  
 Union Iron Works Inc  
 Hi Roller Conveyors  
 InterSystems

Greater Nebraska  
 Great Plains  
 Minneapolis  
 Intermountain

Seaway  
 Greater Nebraska  
 Non-chapter  
 Non-chapter  
 Cornbelt  
 Siouxland  
 Kansas City  
 Cornbelt  
 Golden Triangle  
 Greater Iowa  
 Siouxland  
 Mid-America

*Staff Liason:* David Krejci





## Marketing Oversight Committee

<i>International Board Chair</i> <b>Tom Price, Chair</b>	Richardson International Ltd	Canadian Prairies
<i>International President</i> Mark Daniels	CHS Inc	Minneapolis
<i>International 1st Vice President</i> Buzz Tourangeau	West Central	Greater Iowa
<i>International Treasurer</i> Timothy Sullivan	West Central	Greater Iowa
<i>Associates Board President</i> Stephen Ginter	Chief Agri-Industrial Div	Greater Nebraska
<i>Associates Board Vice President</i> Craig Jones	Tramco Inc	Great Plains
<i>Membership Committee Chair</i> Mark Fedje	General Mills Inc	Minneapolis
<i>Chapter Resource Committee Chair</i> Ron Demaray	RCI	Kansas City
<i>Educational Programming Committee Chair</i> Kathy Reading	Seedburo Equipment Co	Cornbelt
<i>Staff Liaison</i> Stephanie Nero		

The Marketing Oversight Committee provides direction and executive leadership support for GEAPS' strategic marketing plan development and implementation to achieve the priority objectives set by the International Board.

## Board Nominations Committees — 2009 Election

### International Board Nominations Committee

<b>Tom Price, Chair</b>	Richardson International Ltd	Canadian Prairies
Wayne Bauer	Star of the West Milling Co	Michigan/So. Ontario
Chad Cook	Deseret Grain Storage	Intermountain
Kevin Danner	West Central	Greater Iowa
Roger Dowdy	Consolidated Grain & Barge Co	Gateway
Mark Hueftle	Cooperative Producers	Greater Nebraska
Ronald Johnson	Duluth Seaway Port Authority	Twin Ports
Ben Lackey	Riceland Foods Inc	Mid-South
Stephen Tillery	Attebury Grain Inc	Tri-State
Mathew Willits	Cargill Inc	Great River
<i>Staff Liaison</i> David Krejci		

The International and Associates Board Nomination Committees are responsible for seeking out and recruiting the best qualified and able volunteers as board director candidates for the annual elections.

### Associates Board Nominations Committee

<b>Robert Schutte, Chair</b>	United Oil	Intermountain
David Drake	Drake Inc	Greater Nebraska
Bo Fisher	Maxi-Lift/Dura-Buket	Non-chapter
Steve Ginter	Chief Agri-Industrial Div	Greater Nebraska
Craig Jones	Tramco Inc	Great Plains
Ray Vrtiska	InterSystems	Mid-America
<i>Staff Liaison</i> David Krejci		



## International Committees and Councils

### Chapter Resource Committee

The Chapter Resource Committee assists chapters by providing information on meeting structure and program development, and motivating members to assume leadership responsibilities. The committee is responsible for presenting Chapter Leader Workshops and developing resources such as the Educational Program Planning Incentive for chapters.

**Ron Demaray, Chair**  
**Dave Healey, Vice Chair**  
 Mark Avery  
 Van Buchanan  
 Susan Hardy  
 Clarence Heckert  
 Craig Jakob  
 Dale Lock  
 Tom Winkel

RCI  
 Agrex Inc  
 Grain Journal  
 RBH Mill & Elevator Supply  
 The Scoular Co  
 Carter Day/Jacobson  
 Great Plains Chemical Co  
 Attebury Grain Inc  
 MaxYield Cooperative

Kansas City  
 Greater Nebraska  
 Cornbelt  
 Great Plains  
 Intermountain  
 Canadian Prairies  
 Non-chapter  
 Tri-State  
 North Iowa

*International Board Liaison*  
 Slawomir "Slav" Waplak  
*Staff Liaison*  
 Julia Kloehn

Viterra Inc  
 Canadian Prairies

### GEAPS Exchange Host Advisory Councils

The councils advise the International Board, Educational Programming Committee and staff on planning and program development for GEAPS Exchange. Council members also support on-site production by organizing local GEAPS-member volunteers to assist with Exchange and Exchange social events. The advisory council primarily comprises GEAPS members and member spouses located in the Exchange host city and surrounding geography. The staff liaison for these councils is Juli Wagner.

#### Exchange 2009

**Rick Fifer, Co-Chair**  
**Nathan Fleck, Co-Chair**  
 John Ahart  
 Ron Albers  
 Mark Avery  
 Donald Brucker  
 Brock Casteel  
 Eric Clements  
 Roger Dowdy  
 Stephen Jordan  
 Paul Luther  
 John Roessler  
 Jeff Routh  
 Josh Weakly  
 Dean Weers

4B Components Ltd  
 Monsanto Co  
 Emerson Power Transmission  
 ADM Grain  
 Grain Journal  
 The Andersons  
 Topflight Grain  
 Topflight Grain  
 Consolidated Grain & Barge Co  
 Moweaqua Farmers Cooperative  
 Land O'Lakes Purina Feed LLC  
 ADM  
 WD Patterson Co  
 Assumption Cooperative Grain Co  
 Prairie Central Cooperative Inc

Cornbelt  
 Gateway  
 Kansas City  
 Gateway  
 Cornbelt  
 Cornbelt  
 Cornbelt  
 Cornbelt  
 Gateway  
 Cornbelt  
 Gateway  
 Gateway  
 Kansas City  
 Cornbelt  
 Cornbelt

#### Exchange 2010

**Brandon Dills, Chair**  
 Samuel "Van" Buchanan  
 Chuck Burleigh  
 Tracy Eustace  
 Larry Forrester  
 Lonnie Glen  
 Roy House  
 Brent Hultgren  
 Gary Kearns  
 Carl Reed  
 Russ Ronnebaum  
 Jeff Routh  
 Michael Stephenson  
 Perry Stussy  
 Douglas Trumble

Co-Mark Inc  
 RBH Mill Elevator Supply  
 Borton LC  
 WD Patterson Co Inc  
 Tramco Inc  
 Kice Industries Inc  
 McPherson Concrete Storage Systems Inc  
 MKC  
 The Scoular Co  
 Precision Grain Mgmt Consultants Inc  
 Hammel Scale Co Inc  
 WD Patterson Co  
 McPherson Concrete Storage Systems Inc  
 MKC  
 Ag 1 Source

Great Plains  
 Great Plains  
 Great Plains  
 Great Plains  
 Great Plains  
 Great Plains  
 Great Plains  
 Great Plains  
 Great Plains  
 Great Plains  
 Great Plains  
 Great Plains  
 Great Plains  
 Great Plains  
 Kansas City  
 Great Plains  
 Great Plains  
 Great Plains



## Educational Programming Committee

<p><b>Kathy Reading, Chair</b>  <b>Kenneth Schmenk, Vice Chair</b>                  Joseph Allen                  Chris Blair                  Mike Brown                  Steve Cashman                  Eric Clements                  Cheryl Gerse                  Patrick Greer                  Kelly Haigh                  Gene Haldorson                  Janette Smith                  Joe Hochstettler                  Ed Howey                  Jim Jundt                  Sam Kennedy                  John Lee                  David Powers                  Mike Ravenstein                  John Rossol                  Paul Schreck                  Robert Taylor                  Dale Vinsand                  Ed Zdrojewski</p> <p><i>Liaisons:</i>  <i>Associates Board</i>                  Deborah Good                  Kathy Reading                  Gary Vaughn  <i>International Board</i>                  Bill Lyster  <i>Staff</i>                  Chuck House</p>	<p>Seedburo Equipment Co                  The Andersons                  Kansas Farmers Service Assn                  West Central                  Consolidated Grain &amp; Barge Co                  Cimbria Bratney Co                  Topflight Grain                  Comco Mfg                  PG Consultants                  Consolidated Grain &amp; Barge Co                  Van Sickle, Allen &amp; Assoc                  West Central                  Blanchard Valley Farmers Cooperative                  Kraft Foods Global                  Pacific Ethanol Columbia LLC                  Orkin/PCO Services Inc                  Grain &amp; Feed Assn of Illinois                  RCI                  The Scoular Co                  Canadian Grain Commission                  Nationwide Agribusiness                  Cargill Inc                  PMI LLC                  Grain Journal</p> <p>Brock Grain Systems                  Seedburo Equipment Co                  Union Iron Works</p> <p>Ag Partners LLC</p>	<p>Cornbelt                  Seaway                  Great Plains                  Siouland                  Hoosier                  Greater Iowa                  Cornbelt                  Canadian Prairies                  Canadian Prairies                  Gateway                  Minneapolis                  Greater Iowa                  Seaway                  Seaway                  Inland Empire                  Canadian Prairies                  Cornbelt                  Greater Iowa                  Great Plains                  Canadian Prairies                  Siouland                  Minneapolis                  Greater Iowa                  Cornbelt</p> <p>Cornbelt                  Cornbelt                  Greater Iowa</p> <p>Greater Iowa</p>
---	---	--

*The Educational Programming Committee identifies subjects and potential speakers for each GEAPS Exchange, evaluates the educational sessions from the previous year and identifies long-term educational objectives for future programs.*

## GEAPS/KSU Distance Education Program Oversight Committee

<p><b>Mike Kiel, Chair</b>  <b>Nathan Fleck, Vice Chair</b>                  Roger Dowdy                  Douglas Forst                  Jerry Gibson                  Jim Jundt                  Larry Roth</p> <p><i>Kansas State University Program Director</i>                  Dirk Maier</p> <p><i>Purdue University Program Manager</i>                  Matt Roberts</p> <p><i>International Board Representative</i>                  Rick Krier</p> <p><i>Associates Board Representatives</i>                  Scott Chant                  Kathy Reading</p> <p><i>Staff Liason</i>                  Chuck House</p>	<p>The Andersons                  Monsanto Co                  Consolidated Grain &amp; Barge Co                  CMC Industrial Electronics Ltd                  Bunge North America                  Pacific Ethanol Columbia LLC                  InterSystems</p> <p>Kansas State University</p> <p>Purdue University</p> <p>Western Iowa Cooperative</p> <p>Safe-Grain/Maxi-Tronic Inc                  Seedburo Equipment Co</p>	<p>Seaway                  Gateway                  Gateway                  Vancouver                  Gulf South                  Inland Empire                  Hoosier</p> <p>Great Plains</p> <p>Hoosier</p> <p>Siouland</p> <p>Seaway                  Cornbelt</p>
---	--	---

*The Distance-Education Program Oversight Committee supports the GEAPS/Kansas State University collaboration to develop Internet-based interactive professional development courses for grain handling operations personnel.*



## International Committees and Councils

### Joint GEAPS/NGFA Committee for Grain Grades & Weights

The Grain Grades & Weights Committee represents GEAPS and National Grain and Feed Association member interest in evolving and emerging grain handling, storage and quality management and regulatory issues. The committee also identifies and responds to industry needs for information about grain industry operations impacts and regulatory compliance.

<b>Tim Paurus, Chair</b>	CHS Inc	Minneapolis
Steve Braden	Tate & Lyle Grain Inc	
Tom Bressner	Assumption Cooperative Grain Co	
<b>Todd Canatella</b>	Zen-Noh Grain Corp	Gulf South
<b>Jerry Cotter</b>	Port of Corpus Christi Authority	Golden Triangle
<b>Warren Duffy</b>	ADM/Growmark	Gulf South
<b>Nicholas Friant</b>	Cargill Inc	Minneapolis
<b>Jerry Gibson</b>	Bunge North America	Gulf South
<b>Michael Lesmeister</b>	The Scoular Co	Mid-America
Shannon McComas	Gavilon LLC	
<b>Dan Mohochko</b>	Louis Dreyfus Corp	Cornbelt
<b>Jim Mendlik</b>	Hansen-Mueller Co	Mid-America
Carl Schwinke	Siemer Milling Co	
<b>Tim Sullivan</b>	West Central	Greater Iowa
<i>Advisory Council</i>		
<b>David Ayers</b>	Champaign-Danville Grain Insp	Cornbelt
<b>Charles Hurburgh</b>	Iowa State University	Greater Iowa
<i>GEAPS Staff Liaison</i>		
David Krejci		
<i>NGFA Staff Liaison</i>		
Jess McCluer		

Names in **BOLD** are GEAPS members

### Joint GEAPS/NGFA Committee for Safety, Health and Environmental Quality

The Safety, Health & Environmental Quality Committee represents GEAPS and National Grain and Feed Association member interest in evolving and emerging safety, health and environmental responsibility management and regulatory issues. The committee also identifies and responds to industry needs for information about grain and feed industry operations impacts and regulatory compliance.

<b>Kevin Danner, Chair</b>	West Central	Greater Iowa
<b>Stacy Schmidt</b>	The Andersons	Seaway
<i>Grain Industry Sector Subcommittee Chair</i>		
<b>Paul Luther</b>	Land O'Lakes Purina Feed LLC	Gateway
<i>Feed Industry Sector Subcommittee Chair</i>		
<b>Gary Kearn</b>	The Scoular Co	Great Plains
<i>Education/Training Subcommittee Chair</i>		
<b>John Angran</b>	Cargill AgHorizons	Minneapolis
Mark Calmes	ADM	
<b>Jim Collins</b>	General Mills Inc	Non-Chapter Minneapolis
<b>Mark Daniels</b>	CHS Inc	Cornbelt
<b>David Debroskey</b>	ADM	Mid-America
<b>Tom Harmon</b>	Gavilon LLC	Kansas City
<b>Larry Jackson</b>	Agrex	
Kelly Jorgenson	Ag Processing Inc	
<b>John Lee</b>	Grain & Feed Assn of Illinois	Cornbelt
Bob Marshall	Bunge North America	
<b>Dan Mehochko</b>	Louis Dreyfus Corp	Cornbelt
<i>Advisory Council</i>		
<b>Julie Bell</b>	RCI	Greater Iowa
<b>Mark Bonk</b>	Cargill Inc	Minneapolis
<i>NFPA-NEC Panel 14 Rep (alternate)</i>		
Barry Brandstetter	Cargill Inc	
Richard Galutia	JW Safety Mgmt & Training Inc	
<b>Jim Maness</b>		
<i>NFPA-61 Representative</i>		
<b>George Pfandler</b>	Bunge North America	Gateway
<b>Mark Wirfs</b>	R&W Engineering	Columbia River
<i>NFPA-NEC Panel 14 Representative</i>		
<i>GEAPS Staff Liaison</i>		
David Krejci		
<i>NGFA Staff Liaison</i>		
Jess McCluer		

Names in **BOLD** are GEAPS members



## Membership Committee

<p><b>Mark Fedje, Chair</b>  <b>William Jefferson, Vice Chair</b>          Ross Carlson          Ryk De Goey          Angela Field          Larry Jackson          Janice Kantola          Rick Krier          Jeff Miller          Charles Scovill          Daryl Watts</p> <p><i>International Board Liaison</i>          Ben Lackey</p> <p><i>Staff Liaison</i>          Amy McGarrigle</p>	<p>General Mills Inc          Messick &amp; Gray Inc          Chief Agri-Industrial Div          SCE Cooperative          Applied Power Products          Agrex Inc          Argonics Inc          Western Iowa Cooperative          Grain Journal          General Mills Inc          RCI</p> <p>Riceland Foods Inc</p>	<p>Minneapolis          Mid-Atlantic          Minneapolis          Greater Iowa          Minneapolis          Kansas City          Michigan/So Ontario          Siouxland          Cornbelt          Minneapolis          North Iowa</p> <p>Mid-South</p>
--	--	---

The Membership Committee provides direction for and oversight of GEAPS' member attraction and retention strategies, initiatives and programs.

## GEAPS/NGFA/NAEGA Agro Terrorism Prevention & Facility Security Committee

<p><b>Jerry Cotter, Chair</b>  <b>Wayne Bauer</b>  <b>Mark Daniels</b>          Judy Fadden          John Fletcher  <b>Nicholas Friant</b>  <b>Paul Luther</b>  <b>Jim Mendlik</b>          Bill Monroe  <b>Thomas Rider</b>          Richard Ryan  <b>Stacy Schmidt</b>          Anthony Yount</p> <p><i>GEAPS Staff Liaison</i>          David Krejci</p> <p><i>NGFA Staff Liaison</i>  <b>Jess McCluer</b></p> <p>NAEGA Contact  <b>Arvid Hawk</b></p>	<p>Port of Corpus Christi Authority          Star of the West Milling Co          CHS Inc          General Mills Inc          Central MO AGRI-Service LLC          Cargill Inc          Land O' Lakes Purina Feed LLC          Hansen-Mueller Co          Southern States Cooperative Inc          Bunge North America          ADM          The Andersons          ConAgra Foods</p>	<p>Golden Triangle          Michigan/So. Ontario          Minneapolis</p> <p>Minneapolis          Gateway          Mid-America</p> <p>Gateway</p> <p>Seaway</p>
---	---	---

The committee's core purpose is to ensure that the best interests of GEAPS, NGFA and NAEGA members are considered and well represented in consideration of current, developing and emerging food defense and facility security issues.

Names in **BOLD** are GEAPS members

## GEAPS/SATRA Bin Entry/Tech Rescue Course Steering Committee

<p><b>Wayne Bauer, Chair</b>          Jeff Decker          Sam Germer          Dirk Maier</p> <p><i>Staff Liaison</i>          David Krejci</p>	<p>Star of the West Milling Co          GSI Group Inc          RCI          Kansas State University</p>	<p>Michigan/So Ontario          Cornbelt          Greater Iowa          Great Plains</p>
---	---	--

The committee represents GEAPS-member interest in program development for the GEAPS-sponsored bin entry/technical rescue training courses produced and taught by the Safety and Technical Rescue Association [SATRA].



## 2008-2009 Chapter Officers

### Canadian Prairies

President  
Chairperson  
Vice President  
Secretary  
Treasurer  
Membership  
Program/Social

### CPR – Winnipeg, MB

**William H. Macauley**, Cargill Ltd  
**Brian Kuffner**, Whiting Equipment Canada Inc  
**Chris Boles**, Crippen Northland Superior Supply  
**Gordon Braun**, Parrish & Heimbecker Ltd  
**Tim Robertson**, EMW Industrial  
**Bob Fryza**, James Richardson Intl  
**Dan Sanders**, Viterra Inc

### Cherokee Strip

President  
Vice President  
Secretary  
Treasurer

### CHS – Enid, OK

**Rick Vickers**, WB Johnston Grain Co Inc  
**Montie Walton**, WB Johnston Grain Co Inc  
**Joey Meibergen**, WB Johnston Grain Co Inc  
**Donnie Wood**, The Triangle Companies

### Columbia River

President  
Secretary

### CLR – Portland, OR

**Randall S. Cooper**, CLD Pacific Grain LLC  
**Matt Strand**, Munnell & Sherrill Inc

### Cornbelt

President  
Vice President  
Secretary  
Treasurer

### CRB – Decatur, IL

**Josh Weakly**, Assumption Cooperative Grain Co  
**Tom Pruser**, Tate & Lyle Grain Inc  
**Rick Fifer**, 4B Components Ltd  
**Kim K. Peterson**, Assumption Cooperative Grain Co

### Gateway

President  
Vice President  
Secretary/Treasurer  
Director  
Director  
Director  
Director

### GTY – St. Louis, MO

**Ron Albers**, ADM Grain  
**Danny Jaspering**, ADM  
**Mark A. Compton**, MAC Electric Co  
**Josh R. Bushue**, ADM Grain  
**Roger L. Dowdy**, Consolidated Grain & Barge Co  
**Don M. Glasscock**, Ironhorse Inc  
**John E. Roessler, Sr**, ADM

### Golden Triangle

Secretary/Treasurer

### GNT – Houston, TX

**James D. Klassen**, Cargill Inc

### Great Plains

President  
Vice President  
Secretary  
Treasurer

### GRP – Hutchinson, KS

**Joseph R. Allen**, Kansas Farmers Service Assn  
**Lonnie Glen**, Kice Industries Inc  
**Perry Stussy**, MKC  
**Brent Hultgren**, MKC

### Great River

President  
Vice President  
Secretary/Treasurer

### GRR – Davenport, IA

**Timothy Bly**, Cargill AgHorizons  
**Matthew W. Kerrigan**, Bunge North America  
**Bill Salyers**, Twomey Co

### Greater Iowa

President  
Vice President  
Secretary  
Treasurer  
Membership

### GRI – Ames, IA

**John A. Tuttle**, Brock Grain Systems  
**Shawn Cogdill**, Farmers Cooperative Co  
**Mark Gaunt**, Heart of Iowa Cooperative  
**Mike Blum**, West Central  
**Julie Bell**, RCI

### Greater Nebraska

President  
Vice President  
Secretary/Treasurer  
Director  
Director  
Director  
Associates Vice Pres.

### GRN – Kearney, NE

**Tracy D. Peterson**, DeBruce Grain Inc  
**Jack A. Crawford**, Cargill AgHorizons  
**Colin P. McClure**, PMI LLC  
**Mark Hueftle**, Cooperative Producers  
**David J. Schmit**, Cargill AgHorizons  
**Mitchell W. Woeste**, Aurora Cooperative Elevator Co  
**Greg Poppe**, Poppe Enterprises

### Gulf South

President  
Vice President  
Secretary  
Treasurer

### GFS – New Orleans, LA

**Scott W. Walsh**, ADM Grain  
**John C. Canatella**, CHS Inc  
**Robert Klare**, River  
**Michael Brand**, Bunge North America

### Hoosier

President  
Vice President  
Secretary  
Treasurer  
Chairman  
Director  
Director  
Director

### HSR – Delphi, IN

**Jaime A. Hernandez**, The Andersons  
**Darren Zink**, Brock Grain Systems  
**Robert Marlow**, The Andersons  
**Todd Rush**, Central States Enterprises LLC  
**Jim Rossman**, Kokomo Grain Co Inc  
**Bob Cain**, Mennel Milling Co  
**Steve L. Mechling**, Central States Enterprises LLC  
**Larry G. Roth**, InterSystems  
**James R. Simpson**, Cargill Inc

### Inland Empire

President  
Secretary/Treasurer

### INE – Kennewick, WA

**Steven S. McClintock**, Tri-Cities Grain  
**Jim Jundt**, Pacific Ethanol Columbia LLC

### Intermountain

President  
Vice President  
Secretary/Treasurer  
Director  
Director  
Director  
Director

### ITM – Pocatello, ID

**Charles G. Ady**, Deseret Grain Storage  
**Randall B. Neiwirth**, Great Western Malting Co  
**Sheldon A. Mayne**, The Scoular Co  
**Jason Myers**, ADM  
**Barbara A. Parris**, Pioneer Grain LLC  
**Kris Smelser**, Coors Brewing Co  
**Jeff Whitehead**, Bratney Companies

### Kansas City

President  
Vice President  
Secretary/Treasurer  
Director  
Director  
Director  
Director

### KSC – Kansas City, MO

**Larry K. Jackson**, Agrex Inc  
**Andy Determan**, The Scoular Co  
**Tom Pruess**, Mill & Elevator Supply Co Inc/  
Rubber Belting & Hose  
**Ron Demaray**, RCI  
**Jeff Rounph**, WD Patterson Co Inc  
**Justin Stanley**, Fairbanks Scales  
**Julie Barron**, Douglas Products and Packaging  
**Janet S. Rickel**, GVS Ltd



**Michigan/So. Ontario MSO – Frankenmuth, MI**  
*President* **Wayne W. Bauer**, Star of the West Milling Co  
*Vice President* **Randy L. Ester**, Michigan Agricultural Commodities  
*Secretary/Treasurer* **Ian Siertsema**, Hensall District Cooperative Inc  
*Director* **Janice Kantola**, Argonics Inc  
*Director* **Dave W. MacMillan**, Pepper Maintenance Canada Inc  
*Director* **David G. Marr**, Michigan Agricultural Commodities  
*Director* **Mark H. Mueller**, Michigan Millers Mutual Ins Co  
*Director* **Peter Myatt**, Great Lakes Elevator Co Ltd

**Mid-America MAM – Omaha, NE**  
*President* **Jeff Mesick**, Cargill Inc  
*Vice President* **Lane Chaney**, Cargill Inc  
*Secretary* **Andrew Heck**, Heck & Sons Co  
*Treasurer* **Tom Malek**, Nationwide Agribusiness  
*Director* **Larry Herman**, AGP Grain Mktg Inc  
*Director* **Denny D. Hesman**, DeBruce Grain Inc  
*Director* **Theron N. Kuhn**, The Scoular Co  
*Director* **Jimmy M. Carlson**, AGP Grain Mktg Inc

**Mid-Atlantic MDA – Baltimore, MD**  
*President* **Scott L. Kephart**, Perdue AgriBusiness  
*Vice President* **Raymond O’Neil**, Power Trans Inc  
*Secretary* **Ken Valdez**, Mountaire Farms Inc  
*Treasurer* **R.Scott Brittingham**, Mountaire Farms Inc  
*Director* **Raymond H. Brittingham**, Mountaire Farms Inc  
*Director* **Jacob Elder**, Perdue AgriBusiness  
*Director* **Christopher Simpkins**, Javan & Walter Inc  
*Director* **John P. Stainbrook**, Mountaire Farms Inc  
*Chairman* **Bill Jefferson**, Messick & Gray Inc

**Mid-South MDS – Stuttgart, AR**  
*President* **Nathan Cook**, Riceland Foods Inc  
*First Vice President* **Jackie Murray**, Riceland Foods Inc  
*Second Vice President* **Randy Goetz**, Riceland Foods Inc  
*Secretary/Treasurer* **Ben B. Lackey**, Riceland Foods Inc  
*Director* **Roger Hackler**, Riceland Foods Inc  
*Director* **Drew Widener**, Riceland Foods Inc

**Minneapolis MPL – Minneapolis, MN**  
*President* **Kent D. Mellen**, BM&M Screening Solutions  
*First Vice President* **Bruce L. Jorgenson**, ADM  
*Second Vice President* **David Olheiser**, Van Sickle, Allen & Associates  
*Secretary* **Bill Amend**, Tandem Products Inc  
*Treasurer* **Denise M. King**, Donaldson Torit  
*Director* **Mark Fedje**, General Mills  
*Director* **Craig Franz**, Rexnord Industries LLC  
*Director* **Greg Oberle**, CHS Inc  
*Director* **John Wellman**, Wellman Enterprises

**North Iowa NIA – Mason City, IA**  
*President* **Mike Wollner**, United Suppliers Inc  
*Vice President* **Daryl Watts**, RCI  
*Secretary/Treasurer* **Greg Van Sickle**, TSGC Inc  
*Prog. Com* **Brian W. Bork**, Nott Co  
*Prog. Com* **Dean Holland**, Stateline Cooperative  
*Prog. Com* **Lynn A. Ostendorf**, Gold-Eagle Cooperative  
*Prog. Com* **Tom Winkel**, MaxYield Cooperative

**Oregon Trail ORT – Ogallala, NE**  
*President* **Ramiro Bazan**, Frenchman Valley Farmers Cooperative  
*Vice President* **Gary State**, Frenchman Valley Farmers Cooperative  
*Secretary/Treasurer* **Jeff Wilkinson**, The Scoular Co

**Seaway SWY – Toledo, OH**  
*President* **Thomas Andorfer**, Bunge North America  
*Vice President* **Walter Barnett**, Deseret Grain Storage  
*Secretary/Treasurer* **Steve Queen**, Advanced Agri-Solutions Co-op Inc  
*Director* **Steve Peters**, Steve Peters Co  
*Chairman* **John D. Dale**, Elevator Service & Storage Inc  
*Director* **Jessica Hetzel**, Custom Agri Systems Inc

**Siouxland SXL – Sioux City, IA**  
*President* **Rick J. Krier**, Western Iowa Cooperative  
*Chairperson* **Jeany Hesse**, Integra Plastics Inc  
*Vice President* **Dan A. Vis**, Hi Roller Conveyors  
*Secretary/Treasurer* **Sue Boland**, Farmers Cooperative Elevator Co  
*Director* **David E. Cornell**, Fabricators Inc  
*Director* **John P. Hoppe**, Western Iowa Cooperative  
*Director* **Paul Schreck**, Nationwide Agribusiness  
*Director* **Bill Verzani**, Sioux City Foundry Co

**Snake River SNR – Lewiston, ID**  
*President* **Alan J. Lee**, Keigley & Co Inc  
*Secretary* **Neal B. Tacke**, CLD Pacific Grain LLC

**Thunder Bay THB – Thunder Bay, ON**  
*President* **Lisa Ellard**, Viterra Inc  
*Vice President* **Christopher P. Bazaluk**, Intertek  
*Secretary* **Jerrett Franklin**, Cargill Ltd  
*Treasurer* **Larry Naismith**, Richardson International Ltd

**Tri-State TRS – Amarillo, TX**  
*President* **Earnest Cantu**, DeBruce Grain Inc  
*Secretary/Treasurer* **Eric Kelley**, Attebury Grain Inc

**Twin Ports TWP – Duluth, MN**  
*President* **Ronald L. Johnson**, Duluth Seaway Port Authority  
*Vice President* **Kim Tullgren**  
*Secretary/Treasurer* **David C. Lundeen**, Gavilon/Peavey Co

**Vancouver VCR – Vancouver, BC**  
*President* **Toivo K. Makila**, Cargill Ltd  
*Vice President* **Douglas K. Birkenthal**, Viterra Inc  
*Secretary* **Brad Sutton**, James Richardson Intl  
*Treasurer* **Lorraine Lego**, Alliance Grain Co

**Wild Goose WGO – Davenport, WA**  
*President/Secretary/Treasurer* **Dennis M. Jordan**, Central WA Grain Growers Inc  
*Vice President* **Duane Erickson**, Central WA Grain Growers Inc



## GEAPS Members Elect New International, Associates Leaders

Mark Fedje, of the *Minneapolis Chapter*, has been elected GEAPS second vice president, placing him on the GEAPS leadership succession path. Fedje's appointment to this position, which puts him on track to become GEAPS International president in 2011, was announced March 3 during the GEAPS annual meeting at Exchange 2009 in St. Louis.

Also announced at the meeting: Rick Krier, of the *Siouxland Chapter*, has succeeded to the office of first vice president. Krier, a GEAPS member for over a decade, will become International president next year at Exchange 2010 in Wichita, Kan.

Additionally, Buzz Tourangeau, *Greater Iowa*, has taken office as GEAPS' 2009-2010 International president. He succeeds in this office 2008-2009 International President Mark Daniels, *Minneapolis*, who is now International board chair.

Associates board election results were also announced in the meeting.

Fedje, a GEAPS member since 1988, is a superintendent for General Mills in Minneapolis, Minn. Additionally, he has participated in committee and chapter leadership. He is 2008-2009 Membership Committee chair, as well as a member of the 2008-2009 Marketing Oversight and International Executive Committees. He is also a 2009 director of the GEAPS *Minneapolis Chapter*.

### INTERNATIONAL SECOND VICE PRESIDENT



**Mark T. Fedje\***  
*Minneapolis Chapter*  
General Mills Inc

### New International Directors Elected

The 2009-2010 International Board directors were also announced at the meeting. Directors elected to a three-year term were Jim Jundt, Pacific Ethanol Columbia LLC, *Inland Empire*; Greg Rowe, Perdue AgriBusiness, *Mid-Atlantic*; and Tom Zemanick, Cargill Inc, *Minneapolis*.

International Board elections were conducted among Regular members by mail in December. The Exchange, which drew approximately 2,100 people from around the world, was GEAPS' 80th annual technical conference and exposition.

The Board plays a major role in determining what programs and services GEAPS provides to advance the industry, according to the organization's strategic plan.

### INTERNATIONAL BOARD DIRECTORS



**Jim Jundt**  
*Inland Empire*  
Pacific Ethanol  
Columbia LLC



**Gregory L. Rowe**  
*Mid-Atlantic*  
Perdue AgriBusiness



**Thomas J. Zemanick**  
*Minneapolis*  
Cargill Inc

## International Board Leadership Appointments

At its March 4 meeting, the International Board made the following leadership appointments, announced and endorsed by International President Buzz Tourangeau.

### 2009-2010 International Board Appointments:

- International 3rd Vice President: Slav Waplak, Viterra Inc, *Canadian Prairies Chapter*
- Exec Vice President/International Secretary: David Krejci, The Harrington Co
- International Treasurer: Tim Sullivan, West Central, *Greater Iowa*
- **Executive Committee:**
  - Chair: International President Buzz Tourangeau, West Central, *Greater Iowa*
  - International 1st VP Rick Krier, Western Iowa Cooperative, *Siouxland*
  - International 2nd VP Mark Fedje, General Mills Inc, *Minneapolis*
  - Exec VP David Krejci, The Harrington Co
  - International Treasurer Tim Sullivan,

West Central, *Greater Iowa*

- International Board Chair Mark Daniels, CHS Inc, *Minneapolis*
- Assc Board President Craig Jones, International Director, Tramco Inc, *Great Plains*
- Bill Lyster, AgPartners LLC, *Greater Iowa*
- GEAPS representative to the NGFA Board: Greg Rowe, Perdue AgriBusiness, *Mid-Atlantic*
- GEAPS liaison to KSU Grain Science & Industry Board: Rick Krier and David Krejci

### 2009-2010 Committee Leader Appointments Chapter Resource

- Ron Demaray, *Kansas City*, chair
- Tom Winkel, *North Iowa*, vice chair
- Slav Waplak, *Canadian Prairies*, IBD liaison
- **Distance Education Program Oversight**
- Mike Kiel, *Seaway*, chair
- Nathan Fleck, *Gateway*, vice chair
- International 1st VP Rick Krier, *Siouxland*,

KSU GSIB rep

### Educational Programming Committee:

- Kathy Reading, *Cornbelt*, chair
- Ken Schmenk, *Seaway*, vice chair
- Bill Lyster, *Greater Iowa*, IBD liaison

### Membership Committee:

- Bill Jefferson, *Mid-Atlantic*, chair
- vice chair to be determined
- Ben Lackey, *Mid-South*, IBD liaison

### Technical Services/Organization Rep[s]:

- 2009-10 Appointments to be Announced NCWM NTEP Technical Committee Sector:
- Grain Analyzers: David Krejci, GEAPS-NGFA Grain Grades & Weights Committee staff liaison

### NFPA Technical Committees & Panels

- Agricultural Dusts Technical Committee NFPA 61
- Jim Maness, *Non-Chapter*
- alternate to be determined Natl Elec Code Hazardous Locations [Panel 14]
- Mark Wirfs, *Columbia River*;
- alternate Mark Bonk, *Minneapolis*





# Associate Members Name New Officers, Directors

The Associate membership of GEAPS elected its 2009-2010 board of directors Monday, March 2 at Exchange 2009 in St. Louis. The GEAPS Associate members represent some 1,000 suppliers of equipment and services to the grain-handling industry.

Election results were announced at the Associates Board of Directors meeting, which was held in conjunction with GEAPS' 80th annual international technical conference and exposition.

The Associates Board represents GEAPS' Associate members who work for companies that supply equipment, products and services to the grain handling operations industry.

Elected to three-year terms to the Associates Board members are:

- Scott Chant, President, Safe-Grain/Maxi-Tronic Inc, *Seaway Chapter*
- John Dale, VP Oper, Elevator Services & Storage Inc, *Seaway*
- Ross Carlson, Reg Sales Mgr, Chief Agri-Industrial Div, *Minneapolis*
- Gary Vaughn, Sales Eng, Union Iron Works Inc, *Greater Iowa*

Elected secretary at the meeting was Associates Board Director Gary Vaughn, Sales Eng, Union Iron Works Inc, *Greater Iowa*. Gary Geist, Gen Mgr, Kings Valley Industries Inc, was then elected to fill Vaughn's three-year director term.

Associates Board officers moving into new positions were Craig Jones, 2009-2010 Associates Board President, and Steve Schmitt, Associates Vice President.

Jones is a sales representative with Tramco Inc, Wichita, Kan., and a member of the *Great Plains Chapter*. Schmitt, vice president of TE Ibberson Co and a member of the *Minneapolis Chapter*, will become Associates 2010-2011 Board president next year at Exchange 2010 in Wichita, Kan.

## ASSOCIATES BOARD DIRECTORS



**Ross A. Carlson**  
*Minneapolis Chapter*  
Chief Agri-Industrial Div



**Scott E. Chant**  
*Seaway*  
Safe-Grain/Maxi-Tronic Inc



**John "JD" Dale**  
*Seaway*  
Elevator Service & Storage Inc



**Gary R. Geist\***  
*Non-chapter*  
Kings Valley Industries Inc

## Associates Board Leadership Appointments

At its March 2 meeting, the Associates Board 2009-2010 President Craig Jones announced his 2009-10 committee member appointments as follows:

### Associates Board Director & Member Recognition Nominations Committee

Ex-officio members:

- Chair: Associates 2008-2009 Board President Steve Ginter, Chief Agri-Industrial Div, *Greater Nebraska Chapter*
- 2009-2010 Associates Board President Craig Jones, Tramco Inc, *Seaway*, and Vice President Steve Schmitt, TE Ibberson, *Minneapolis*
- David Drake, Drake, *Greater Nebraska*
- Bo Fisher, Maxi-Lift Inc, *Non-Chapter*
- Tim Pruess, Mill & Elevator Supply Co/Rubber Belting & Hose, *Kansas City*

### International Board Committee 2009-2010 Representative Appointments

GEAPS/KSU Distance Education Program Oversight Committee:

- Scott Chant, Safe Grain/Maxi-Tronic, *Seaway*
- John Dale, Elevator Service and Storage, *Seaway*
- Kathy Reading, Seedburo Equipment Co, *Cornbelt*

## ASSOCIATES BOARD SECRETARY



**Gary Vaughn**  
*Greater Iowa*  
Union Iron Works Inc



## Newest GEAPS Safety Award Winners Announced at Exchange 2009

ST. LOUIS — GEAPS honored 418 facilities from 31 companies at Exchange 2009 for their outstanding safety records last year. Together, the facilities posted over 12 million personnel hours without a work-related lost-time injury or illness during 2008.

Kevin Danner, chairman of the joint GEAPS-NGFA Joint Committee on Safety, Health & Environmental Quality, praised the participants for their skill and dedication to safety. Danner presided over the awards during the GEAPS annual meeting here March 3.

"Twelve months of facility safety is a significant achievement, and doing so without any lost time is particularly worthy of note," said Danner, before naming the qualifying companies.



GEAPS also honored companies and facilities with extended records of achievement in safety. One of the awards went to the top five facilities, measured through the years in terms of cumulative hours without a lost-time injury or illness. Winners honored at the Exchange were:

*Number 5:* Cargill Grain & Oilseeds' Houston Export Elevator in Houston, Texas

*Number 4:* The Andersons' facility in Champaign, Illinois

*Number 3:* Farmers Grain Terminal's facility in Greenville, Missouri

*Number 2:* Bunge North America's facility in Decatur, Illinois

*Number 1:* Bunge North America's facility in Atchison, Kansas, with 1.06 million hours.



Bunge North America, Atchison, Kansas

Honors were also given to facilities for the number of consecutive years they've received a GEAPS safety award. There was a four-way tie for fifth place among facilities that have gone 20 years without a lost-time work-related injury or illness. They are:

- Cargill Grain & Oilseeds' Albany Hudson River Terminal facility in Albany, New York;
- The Scouler Co's facility in Lamar, Nebraska;
- Bunge North America's facility in Newport, Arkansas; and
- The Scouler Co's facility in Sidney, Nebraska.

There was also a four-way tie for fourth place among facilities that have each gone 22 years without a lost-time work-related injury or illness. They are all Bunge North America facilities, located in Hickman, Kentucky; Huffman, Arkansas; LaGrange, Missouri; and Yazoo City, Mississippi.

In third place was Cargill AgHorizons' facility in Tipton, Indiana, which has gone 23 years without a lost-time work-related injury or illness.

In second place was Bunge North America's Fountain Bluff facility in Grand Tower, Illinois, with 26 years without a lost-time work-related injury or illness.

Bunge North America's DeSoto Landing facility in Arkansas City, Arkansas, came in first for consecutive years. The facility has gone 30 years without a lost-time work-related injury or illness.

"I'd like to stress that that is three decades," said Danner. "That is an amazing accomplishment, and everyone there should be very proud. Think of the work that goes into just one year."



Bunge North America, DeSoto Landing, Arkansas City, Arkansas

The list (below) indicates companies and the number of their facilities that did not record a work-related lost-time injury or illness last year. A number after a facility name indicates five or more consecutive years receiving an award; "\*" indicates top five cumulative years receiving a Safety Award; "+" indicates top five cumulative hours without a lost-time injury.

### Agrex Inc

**Nebraska**  
Enola <sup>13</sup>  
Superior

### The Andersons Inc

**Illinois**  
Champaign <sup>17+</sup>

### Indiana

Clymers  
Dunkirk <sup>9</sup>  
Oakville

### Michigan

White Pigeon <sup>9</sup>

### Ohio

Edwin <sup>5</sup>

### Illinois

Kuhlman  
Metamora <sup>6</sup>  
Reynolds

### Attebury Grain LLC

#### Texas

Amarillo  
Bernstein  
Black  
Brownfield  
Burkburnett  
Claude  
Groom  
Happy  
Hoover  
Kress  
Lubbock  
Pampa  
Plainview  
Tulia  
White Deer

### Bunge North America

#### Alabama

Port of Decatur

#### Alberta

Fort Saskatchewan  
Wainwright

#### Arkansas

Augusta <sup>10</sup>  
Clarendon <sup>18</sup>  
Des Arc <sup>17</sup>  
DeSoto Landing <sup>30+</sup>  
Helena <sup>6</sup>  
Huffman <sup>22\*</sup>

Linwood <sup>11</sup>  
Newport <sup>20\*</sup>  
Osceola <sup>12</sup>  
Pine Bluff <sup>7</sup>  
St Charles

### Illinois

Albany <sup>14</sup>  
Allerton <sup>9</sup>  
Cairo  
Catlin <sup>6</sup>  
Dale <sup>15</sup>  
East Hannibal <sup>10</sup>  
Fithian  
Fountain Bluff <sup>26\*</sup>  
Harrisburg <sup>18</sup>  
Homer <sup>5</sup>  
Shawneetown <sup>7</sup>

### Indiana

Decatur <sup>+</sup>  
Morristown  
Waterloo <sup>5</sup>

### Iowa

Council Bluffs <sup>7</sup>  
McGregor <sup>9</sup>  
Meekers Landing <sup>6</sup>

### Kansas

Atchison <sup>5+</sup>  
Emporia

### Kentucky

Hickman <sup>22\*</sup>  
Owensboro

### Louisiana

Book <sup>9</sup>  
Goodrich Landing <sup>6</sup>  
Jonesville <sup>6</sup>  
Lake Providence <sup>7</sup>  
Lettsworth  
Mermentau <sup>5</sup>  
St. Joseph  
Tallulah A <sup>19</sup>  
Tallulah Port <sup>6</sup>  
Vidalia <sup>10</sup>

### Manitoba

Harrowby

### Mississippi

Hurricane Point <sup>10</sup>  
Marks  
Mayersville <sup>7</sup>  
Vicksburg <sup>7</sup>  
Yazoo City <sup>22\*</sup>



- Missouri**  
Caruthersville<sup>5</sup>  
LaGrange<sup>22\*</sup>  
Linda<sup>7</sup>
- Nebraska**  
Brownville<sup>15</sup>  
Stella<sup>15</sup>
- Ohio**  
Cincinnati<sup>5</sup>  
Delphos<sup>5</sup>  
Marion<sup>5</sup>
- Quebec**  
St Jean  
St Lambert  
Ste Elizabeth  
Ste Madeleine  
Ste Rosalie  
Quebec City
- Saskatchewan**  
Dixon  
Nipawin
- Tennessee**  
Boothspoint<sup>15</sup>  
Heloise<sup>9</sup>  
Memphis<sup>10</sup>
- CHS Inc**
- Minnesota**  
Savage
- CLD Pacific Grain**
- Oregon**  
Arlington  
Boardman
- Washington**  
Burbank<sup>5</sup>  
LoMo<sup>6</sup>  
Windust<sup>6</sup>
- Cargill AgHorizons**
- Colorado**  
Burlington<sup>9</sup>  
Byers<sup>6</sup>  
Cheyenne Wells<sup>13</sup>  
Limon<sup>9</sup>
- Illinois**  
Beardstown<sup>6</sup>  
The Brocton Group  
East St Louis<sup>8</sup>  
Florence<sup>6</sup>  
Gibson City<sup>9</sup>  
Gilman<sup>8</sup>  
Havana N&S<sup>6</sup>  
Hennepin<sup>9</sup>  
Lacon<sup>8</sup>  
Meredosia<sup>6</sup>  
Morris  
New Boston<sup>6</sup>  
Ottawa<sup>7</sup>  
Seneca<sup>8</sup>  
Spring Valley<sup>8</sup>  
The Tuscola Group<sup>9</sup>
- Indiana**  
Aylesworth<sup>6</sup>  
Boston<sup>7</sup>  
Bremen<sup>8</sup>  
Burns Harbor<sup>9</sup>  
Dana<sup>9</sup>  
Evansville<sup>6</sup>  
Lapaz<sup>8</sup>  
Linden<sup>11</sup>  
Mt Vernon  
Princeton<sup>6</sup>  
Tipton<sup>23\*</sup>  
Vincennes, Ramsey  
Road
- Iowa**  
Buffalo<sup>6</sup>  
Council Bluffs<sup>7</sup>  
Dubuque<sup>6</sup>  
Hamburg<sup>7</sup>  
Muscatine<sup>6</sup>
- New Sharon<sup>6</sup>
- Kansas**  
Atchison<sup>7</sup>  
Cunningham  
Elkhart<sup>10</sup>  
Hugoton<sup>7</sup>  
Hutchinson E&W<sup>8</sup>  
Katy<sup>7</sup>  
Langdon  
Moscow<sup>7</sup>  
Salina  
Wakeeny
- Kentucky**  
Hickman<sup>6</sup>
- Minnesota**  
Alberta<sup>6</sup>  
Alpha  
Gluek  
Litchfield<sup>6</sup>  
Marna  
Maynard<sup>6</sup>  
Miloma<sup>6</sup>  
Savage West
- Missouri**  
Buffalo Island<sup>6</sup>  
Forest City<sup>6</sup>  
KC Chouteau<sup>9</sup>  
New Madrid<sup>6</sup>  
Sikeston<sup>6</sup>
- Nebraska**  
Albion<sup>6</sup>  
Alma  
Arapahoe  
Carleton<sup>7</sup>  
Elwood  
Gibbon<sup>6</sup>  
Heartwell<sup>6</sup>  
Holdrege<sup>6</sup>  
Lincoln<sup>8</sup>  
Motala  
O'Neill<sup>6</sup>  
Ord<sup>7</sup>  
Oxford  
Ravenna<sup>6</sup>  
Shelton<sup>6</sup>
- Ohio**  
Bloomingsburg<sup>6</sup>  
Cincinnati - Kellogg<sup>7</sup>  
Circleville<sup>7</sup>  
Lima<sup>15</sup>
- South Dakota**  
Emery<sup>6</sup>  
Parker  
Vienna<sup>6</sup>
- Tennessee**  
Hales Point<sup>9</sup>  
Memphis 2nd Street<sup>8</sup>  
New Johnsonville  
Tiptonville<sup>9</sup>
- Texas**  
Hart<sup>6</sup>  
Kerrick<sup>6</sup>  
Spearman<sup>7</sup>
- Wisconsin**  
Shullsburg
- Cargill Canada**
- Alberta**  
Albright<sup>6</sup>  
Beiseker<sup>6</sup>  
Blackie  
Burdett<sup>6</sup>  
Calgary<sup>6</sup>  
Camrose  
Edmonton<sup>6</sup>  
Equity  
Ervick<sup>6</sup>  
Fairview<sup>6</sup>  
Grimshaw<sup>6</sup>  
Leduc
- Lethbridge<sup>6</sup>  
Lloydminster  
Manning<sup>6</sup>  
Marwayne<sup>6</sup>  
Rycroft<sup>6</sup>  
Spruce Grove  
Vegreville  
Vermillion<sup>6</sup>  
Viking<sup>6</sup>
- Manitoba**  
Altona<sup>6</sup>  
Carberry<sup>6</sup>  
Carman<sup>5</sup>  
Dauphin<sup>6</sup>  
Elm Creek<sup>6</sup>  
Elva  
Morris<sup>6</sup>  
Nesbitt  
Oakner  
Plumas<sup>6</sup>  
Roblin<sup>6</sup>  
Swan River<sup>6</sup>  
Winkler<sup>6</sup>  
Winnipeg East<sup>6</sup>
- Ontario**  
Alliston<sup>6</sup>  
Clinton<sup>6</sup>  
Courtland/  
Springford  
Greenway<sup>6</sup>  
Harriston<sup>6</sup>  
Harrow<sup>6</sup>  
Melbourne<sup>6</sup>  
Mt Albert<sup>6</sup>  
Princeton<sup>6</sup>  
Sarnia Terminal  
Shetland  
Staples<sup>6</sup>  
Strathroy<sup>6</sup>  
Talbotville<sup>6</sup>  
Thunder Bay<sup>7</sup>  
Tilbury<sup>6</sup>  
Waterford<sup>5</sup>
- Saskatchewan**  
Balcarres  
Birch Hills<sup>6</sup>  
Canwood<sup>6</sup>  
Congress  
Davidson  
Kindersley  
Langbank<sup>6</sup>  
Moose Jaw<sup>6</sup>  
Nicklen Siding<sup>6</sup>  
North Battleford  
Raymore<sup>6</sup>  
Rosetown<sup>6</sup>  
Rowatt<sup>6</sup>  
Unity<sup>6</sup>  
Wynyard<sup>6</sup>  
Yorkton<sup>6</sup>
- Cargill Grain & Oilseeds**
- Florida**  
Tampa
- Louisiana**  
Port Allen  
Reserve  
Westwego
- New York**  
Albany Hudson  
River Terminal<sup>20\*</sup>
- Texas**  
Houston Export  
Elevator<sup>9+</sup>
- Cargill Inc**
- Illinois**  
Pesotum
- Ohio**  
Cincinnati - River  
Road
- Consolidated Grain and Barge**
- Illinois**  
Enfield<sup>5</sup>  
Wayne City
- Indiana**  
Connersville
- Ohio**  
Anderson Ferry  
Riverside
- Control Stuff**
- Minnesota**  
Cologne
- Farmers Cooperative Co**
- Iowa**  
Ackley  
Altoona  
Bayard  
Britt<sup>7</sup>  
Buckeye  
Ida Grove  
Newell  
Odebolt  
Pleasant Hill  
Rake  
Rockwell City<sup>8</sup>  
Yetter<sup>8</sup>
- Farmers Grain Terminal**
- Arkansas**  
Yellow Bend<sup>9</sup>  
Lake Village<sup>9</sup>
- Louisiana**  
Tallulah<sup>9</sup>  
Waterproof<sup>9</sup>  
Waverly
- Mississippi**  
Belzoni<sup>9</sup>  
Greenville<sup>9+</sup>  
Greenwood  
Hollandale<sup>9</sup>  
Indianola<sup>8</sup>
- Gavilon Grain LLC**
- Wisconsin**  
Prairie du Chien
- General Mills Inc**
- Minnesota**  
Checkerboard<sup>5</sup>  
Elevator T<sup>10</sup>  
Soo Elevator<sup>8</sup>
- Latty Grain Ltd**
- Ohio**  
Latty Grain
- MillerCoors LLC**
- Colorado**  
Longmont  
McIntyre  
Monte Vista
- Idaho**  
Burley
- Montana**  
Huntley
- Wyoming**  
Worland
- PACMA**
- New York**  
Lakeville
- Pennsylvania**  
Greencastle  
Marietta  
Palmyra  
Upper Dauphin
- Pacific Ethanol**
- Oregon**  
Pacific Ethanol  
Columbia
- Perdue Agri Business**
- Delaware**  
Bridgeville  
Seaford North  
Seaford South
- Kentucky**  
Livermore  
Winchester
- Maryland**  
Berlin  
Bishop  
Easton  
Hurlock  
Linkwood  
Lothian  
Lynch  
North East  
Roberts  
Salisbury  
Shiloh  
Sudlersville
- North Carolina**  
Barber/Cleveland  
Chadbourn  
Cofield  
Greenville  
Lumberton  
Pantego/Belhaven  
Plymouth
- New Jersey**  
Bordentown  
South Jersey
- South Carolina**  
Hamer
- Virginia**  
Chesapeake  
Kilmarnock  
Kinsale  
Richmond  
Tappahannock
- Riceland Foods Inc**
- Arkansas**  
Corning<sup>7</sup>  
Delaplaine<sup>16</sup>  
Des Arc<sup>5</sup>  
Dumas<sup>6</sup>  
Fair Oaks<sup>7</sup>  
Gillett<sup>16</sup>  
Griffithville<sup>6</sup>  
Hazen<sup>5</sup>  
Hickory Ridge<sup>5</sup>  
Holly Grove  
Knobel<sup>11</sup>  
Lonoke  
Newport<sup>8</sup>  
Parkin<sup>9</sup>  
Pendleton<sup>11</sup>  
Soybean Terminal  
Weiner  
West Memphis<sup>11</sup>  
Wheatley<sup>15</sup>
- Missouri**  
Dudley<sup>13</sup>  
Poplar Bluff<sup>13</sup>
- The Scoular Co**
- Colorado**  
Sterling<sup>7</sup>
- Idaho**  
Bancroft<sup>5</sup>  
Grace  
Jerome  
Michaud<sup>5</sup>
- Illinois**  
Container Freight
- Kansas**  
Coolidge  
Downs  
Goodland  
Salina  
Wellington
- Missouri**  
Harrisonville<sup>13</sup>
- Montana**  
Silverbow<sup>8</sup>
- Nebraska**  
Big Springs<sup>10</sup>  
Brandon (Grant)<sup>5</sup>  
Elsie  
Grainton  
Holdrege  
Lamar<sup>20\*</sup>  
Madrid  
Sidney<sup>20\*</sup>  
Sutherland<sup>10</sup>  
Venango  
Wallace<sup>5</sup>
- Ohio**  
Thurston<sup>6</sup>
- Utah**  
Ogden  
(Pennsylvania)
- Virginia**  
Windsor
- South Dakota Wheat Growers**
- South Dakota**  
Alpena<sup>9</sup>  
Carpenter  
Chamberlain  
Fertilizer  
Willow Lake
- Star of the West Milling Co**
- Michigan**  
Frankenmuth  
Gera<sup>10</sup>  
Richville<sup>5</sup>
- Structural Restoration Inc**
- Minnesota**  
Minneapolis<sup>6</sup>
- Tate and Lyle Grain**
- Illinois**  
Leroy "Northern Group"<sup>5</sup>
- West Central**
- Iowa**  
Audubon<sup>12</sup>  
Beaver<sup>6</sup>  
Boxholm<sup>5</sup>  
Dawson<sup>8</sup>  
Exira  
Halbur<sup>7</sup>  
Paton<sup>6</sup>  
Ralston Feedmill  
Templeton  
Woodward
- WindRiver Grain LLC**
- Kansas**  
Garden City
- Zeeland Farm Services Inc**
- Michigan**  
Zeeland Farm Soya
- Zen-Noh Grain Corp**
- Louisiana**  
Zen-Noh Grain  
Elevator



## GEAPS and Kansas State University Roll Out Four Distance-Education Courses

GEAPS and Kansas State University are ready to launch the most ambitious slate of distance-education courses in the program's four-year history.

Three brand-new courses and one that has been offered previously are now open for enrollment. They are:

- GEAPS 542 – Electrical Safety for Grain and Processing Facilities, a new course opening April 13.
- GEAPS 521 – Aeration System Design and Operational Management, another new course opening on the same date.
- GEAPS 510 – Facilities Planning and Design I, a repeat course also opening April 13, and
- GEAPS 522 – FGIS Grain Inspection Orientation, a new course developed by the Federal Grain Inspection Service, opening June 1.



Details about the courses, along with registration form, are printed nearby.

"We are thrilled to be able to offer these exceptional courses to our members and others in the grain and grain-processing industries," said GEAPS International President Mark (Buzz) Tourangeau. "For anyone interested in learning more about their profession, these courses offer great and unique opportunities."

GEAPS members are entitled to sizable discounts on registration, Tourangeau noted.

The courses, which run for five weeks, are designed for convenience. No travel is required, and the work may be completed day or night, seven days a week. Lectures come on CDs that are mailed to students, and quizzes and interaction among students and faculty members are handled online. People who successfully complete the work receive one continuing education unit from Kansas State University.

"These courses are the product of thousands of hours of painstaking effort by volunteer members and other experts in the industry who put them together for our distance-education program," Tourangeau said. "They are providing an indispensable service, and I can't thank them enough."

GEAPS and KSU are partners in a program that offers real-world distance-ed courses for GEAPS members and others in the industry.

Registration forms are printed nearby. Registration is also available online at [www.geaps.com](http://www.geaps.com). For more information, please contact GEAPS at (952) 928-4640.



# GEAPS 521 Aeration System Design and Operational Management

Course runs April 13 to May 15

This course, led by Dr. Dirk Maier of Kansas State University, teaches the basic principles of designing and operating grain aeration systems. At its core, it's an opportunity to learn how to maintain grain quality, and is expected to be useful throughout the grain-operations profession. Virtually everyone with managerial responsibilities at the facility level and beyond needs to understand how aeration systems should be designed, and how they work effectively.

The course, which had been scheduled to begin in January, runs March 2 through April 3. It focuses on the design and operation of aeration systems for dry grain storage structures with flat, hopper and V-bottoms in corrugated steel bins, concrete silos, large-diameter tanks, horizontal storage structures and outdoor piles/bunkers. The relationship between air and grain properties will be reviewed and the selection and sizing of fans and their operational management for conditioning and cooling grains will be thoroughly discussed.

Lectures will cover:

## Lecture 1 – Objectives of Aeration & Aeration System Components

Goal: To introduce students to the importance of aeration for the purpose of cooling and conditioning stored grains and to review the key system components including fans, transitions, ducts, floors, vents and controls.

Topics:

- Cooling of grain to maintain grain quality, and suppress insects, mites & molds
- Fan types
- Supply and transition ducts, manifolds, elbows
- Roof vents
- Perforated flooring
- Fan controllers

## Lecture 2 – Relationship between air and grain properties

Goal: This lecture reviews the relationship between air properties (psychrometrics) and grain properties (equilibrium moisture content).

Topics:

- Basic air properties & psychrometric relationships
- Grain equilibrium moisture content relationships

- Determining safe storage moisture contents
- Using psychrometrics to analyze local and historic weather data

## Lecture 3 – Airflow rates, resistance to airflow and air distribution patterns

Goal: This lecture focuses on the relationship between airflow rates and resistance to airflow through different grain types and grain depths, and reviews distribution of airflow through peaked, leveled, cored and inverted grain held in various storage structure configurations with flat, hopper and V-bottoms.

Topics:

- Airflow rates required for cooling and conditioning
- Direction of airflow
- Concept of frictional resistance
- Estimating static pressure drop through grain
- Estimating pressure drop through aeration system components
- Pressure patterns
- Fine material concentration
- Non-uniform airflow in grain

## Lecture 4 – Fan Sizing and Selection

Goal: To discuss the importance of proper fan sizing and selection to achieve desired operational effects

Topics:

- Principles of fan sizing & selection
- Fan performance characteristics

## Lecture 5 – Design & layout of aeration systems in flat & hopper bottom round bins, silos and tanks

Goal: To familiarize students with the engineering calculations and design considerations involved in sizing and laying out the simplest aeration systems.

## Lecture 6 – Design & layout of aeration systems in flat and V-bottom horizontal storage structures

Goal: To familiarize students with the engineering calculations and design considerations involved in sizing and laying out more complex aeration systems.

## Lecture 7 – Design & layout of aeration systems in outdoor piles and bunkers



Dirk Maier

Goal: To familiarize students with the engineering calculations and design considerations involved in sizing and laying out the most complex aeration systems.

## Lecture 8 – Selecting ambient air for the operation of aeration systems

Goal: To familiarize students with the considerations involved in operating aeration systems under various climatic conditions.

Topics:

- Evaluating local and historic weather conditions
- Effect of weather patterns on aeration effectiveness

## Lecture 9 – Operational strategies for fan operation to condition and aerate (cool) grains

Goal: To review the various operational strategies to cool and condition grain.

Topics:

- Operational settings for aeration control systems
- Aeration cooling to prevent mold development and self-heating
- Aeration cooling to prevent insect infestation and development
- Aeration to condition moisture content of stored grain
- Aeration in upright vs horizontal structures
- Aeration of outdoor piles and bunkers

## Lecture 10 – Selecting and utilizing aeration control equipment

Goal: To familiarize students with the advantages and disadvantages of various aeration controllers.

Topics:

- Simple mechanical controllers
- Complex electromechanical controllers
- Microprocessor and computer-based controllers
- Selecting aeration controllers
- Predicting aeration system performance



## GEAPS 510 Grain Facilities Planning and Design I

Course runs April 13 to May 15

More than 90 people have already completed "Grain Facilities Planning and Design I," the first course ever offered through the GEAPS distance-education program. Due to industry interest, we're offering it again.

The course, which covers key components of grain facility planning and design projects, is based on GEAPS' Facility Design Conference, held in 2002. Lectures, given by several of the top professionals in the field, discuss:

**1. Grain-Handling World Outlook and Trends, Strategic Operations Planning** – Global trends in the grain industry; strategic planning and its advantages; steps in the strategic-planning process.

**2. Grain Terminal and Other Project Considerations** – Requirements necessary when undertaking a design project. Topics include project-team selection, the budgeting process, site selection, main terminal storage options and the main methods of construction

**3. Truck and Railcar Receiving Systems** – A discussion of grain-terminal receiving systems, this lecture will address considerations during design, weighing-system options; the efficiency factor (what it is and how to

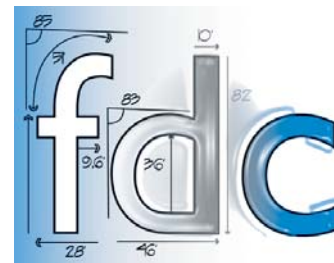
improve it), and what to consider about traffic flow and types of traffic

**4. Truck, Track and Bulk Weighing Systems** – Covers the basics of scale-system options; regulatory agencies, considerations in scale selection, types of scales available, environmental concerns, how bulk-weighing systems work, railroad influence on scale system choices, and rules of thumb for bulk-scale component sizing

**5. Sampling System Design and Specification** -- Current sampling-system designs and their uses; why a sampling system is needed; major reasons for automated sampling; what information is needed to design a sampling system; sampling-system regulations and enforcement; and tips and suggestions for better sampling-system designs

**6. Regulatory Considerations for Sampling** – Sampling systems and the need to inspect and validate them; common sources of error in a sampling system and how to correct them; important concepts in grain-quality measurement; and the future of sampling techniques

**7. Conveying Systems** – A discussion of the many design and selection aspects of conveying systems. The lecture will address enclosed belt conveyors, chain conveyors,



bucket elevators and new conveyor technology and what is driving it

**8. Grain Distribution Systems** – Major points in a grain-distribution system and the different options available; distribution-system components, why spout angles matter and what those angles should be for various commodities, and spout lining.

**9. Small Grains Cleaning Systems** – Considerations in designing a cleaning system for small grains, and how the system should function; key design tasks of cleaning systems, impacts of product specification on cleaning systems, objectives of both primary and secondary cleaning systems; and recent technological advances in cleaning systems

**10. Large Grains Cleaning Systems** – Considerations in designing a cleaning system for large grains and how the system should function; main cleaning operations, factors that affect performance, cleaner motions and what to look for when comparing systems

## GEAPS 522 FGIS Grain Inspection Orientation

Course runs June 1 to July 3

In planning and development for more than a year, "FGIS Grain Inspection Orientation," a new offering from the GEAPS-KSU partnership, is the product of collaboration between multiple parties, and the largest single undertaking in the four-year history of GEAPS' distance-education program.

"Industry leaders, GEAPS, Kansas State University and the Federal Grain Inspection Service all worked closely together to determine what the industry wanted and needed in a course like this," said Mike Kiel, chairman of the GEAPS-KSU distance-education oversight committee. "Once we understood, FGIS pulled the material together and packaged it expertly. It's been an outstanding effort. This is an excellent course and it's going to be useful to a wide variety of people."

The course focuses on the U.S. national

grain inspection and marketing system. According to Jerry Gibson of Bunge North America and the GEAPS-KSU distance education committee, it's likely to benefit facility managers, merchandisers, foreign grain buyers and others, especially those in the early stages of their careers, but also anyone with a need to learn more about how the American system works.

John Sharpe, Director of GIPSA's Technical Services Division, said GIPSA's primary purpose in the collaboration has been to make information about the official grain inspection system as accessible to the industry as possible.

Sharpe noted that the impetus for the collaboration came from GIPSA's Grain Inspection Advisory Committee, which Gibson leads. The board is comprised of representatives



John Sharpe

of all segments of the grain production and marketing chain. The committee specifically recommended that GIPSA join forces in a distance-education program.

The five-week, 12-lecture course will cover:

**1. Grain Production and Marketing** – An overview of the commercial production and uses of the standardized grains; an overview of factors that affect grain quality during production, harvest, and storage; and an overview of how grain moves through the market channels from producer to end user.

**2. Grain Marketing Legislation** – Reviews

(continued)



# GEAPS 542 Electrical Safety for Grain and Processing Facilities

Course runs April 13 to May 15

“Electrical Safety for Grain and Processing Facilities,” a new course offering from GEAPS and Kansas State University, was created in response to an acute perceived need, and is linked to a personal tragedy.

“Every year, lives are lost and facilities are damaged by dust explosions in grain facilities,” noted Doug Forst, who created the course and dedicated it to the memory of his friend and former colleague David Brown, killed in a grain-facility explosion 34 years ago. “Most if not all of these explosions are preventable. For many of the incidents, a confirmed cause in never found, but some are caused by electrical-system failures.”

Working with GEAPS and KSU, Forst, the president of CMC Industrial Electronics in Burnaby, B.C., Canada, built the course from the ground up and delivers all the lectures.

“Grain-processing facilities require special electrical equipment and wiring practices to make them safe,” he said. “In my travels as a vendor to the grain industry, I have encountered dozens of unsafe wiring systems in grain facilities. Some were so severe I have refused to remain at the site and written warning letters to management expressing my concerns. We can do better in protecting our workers and facilities from dust explosions.”

The course is a basic introduction to electrical safety in grain facilities. It is designed to give maintenance persons and management

enough information to:

- Review their facility for possible deficiencies
- Know what classifications of equipment are acceptable and how to read equipment labels
- Assist in the selection of an electrical contractor and prepare work orders and purchase orders for electrical work

The course is intended for facility managers, superintendents, contractors, maintenance personnel, safety professionals and others with a need to know about grain facility electrical safety.

Lectures cover:

- 1. Fires and Explosions** – Causes of fires and explosions that occur in grain facilities, and how they relate to electrical safety
- 2. Equipment Standards** – A review of the published standards for electrical equipment used in grain facilities
- 3. Different Standards for Different Areas** – The basics of how to determine the electrical classification of different areas of a grain facility
- 4. Electric Motors** – A description of the types of electric motors used in grain facilities, and how to select the correct motor for a classified area
- 5. Lighting** – Electrical requirements for lighting in a grain facility, how lighting can be a hazard, what types of lighting are available,



Doug Forst

and how to select the correct type of lighting for an area

**6. Intrinsically Safe Systems** – This lecture discusses “Intrinsically Safe Systems” and shows how they can be used in grain facilities.

**7. Audits** – How to complete an audit, determining the classification of each area of the facility, verifying that installed equipment meets the class requirements, and developing an action plan to bring unsafe areas into compliance

**8. Selecting an Electrical Contractor** – How to select an electrical contractor to perform work in a grain facility; contractor qualifications, licensing requirements, and safety training and orientation before the work begins.

**9. Minimum Contracts** – What is required to contract with an electrical contractor before work begins on an electrical project; minimum-specification documentation, descriptions of work to be done, and inspection requirements on completion of the work

**10. Repairs** – Supervising repairs to electrical equipment in grain facilities, and assuring that the repairs do not compromise the electrical rating of the equipment; replacing motors, limit- and proximity-switch replacement, lighting and lighting enclosures and hazards-monitoring systems and components.

(continued)

the legislation enacted to standardize the trading of grain in the U.S. It covers the problems they were originally intended to address and how they impact grain marketing today.

**3. The U.S. Grain Standards Act** (in plain English) – A section-by-section review of the grain Standards Act with plain English explanations of the intent/purpose and meaning of each section.

**4. Industry Trading Rules** – An overview industry trading rules and how they interact with official inspection. Segments discuss how the industry rules are used in domestic and export grain transactions, and how disputes are settled.

**5. Overview of Grain Inspection** – An overview of the determination of grain quantity and quality from the house grader to the official system. To aid individuals in knowing who to contact with questions on the official system, it provides an overview of FGIS organizational responsibilities. It also covers the roles of governmental organizations in

grain marketing, and provides an overview of resources available to industry graders.

**6. The Regulations under the U.S. Grain Standards Act** – Covers the regulations, what they are, and how they are modified in plain English. It contains a section-by-section review of the General Regulations.

**7. Grain Quality Factors** – Reviews factors used to indicate grain quality. Primarily it covers the factors that are generally recognized to lower quality but also covers other factors that describe quality such as protein and oil, and lastly, genetically modified organisms which have had a controversial impact on perceived quality.

**8. Sampling** – Covers the importance of grain sampling, the methods and techniques used, and the statistical basis for grain sampling procedures.

**9. Grain Inspection Lab Tour** – Video tour of a grain inspection lab focusing first on the equipment used in inspection, and then looking at the reference methods and calibration processes behind the technology.

**10) Official Inspection Services** – Covers the inspection process starting with the Kinds and Levels of inspection. Special emphasis is given to the review inspection process. The lecture also provides a look at a typical sample-lot inspection: the tests that are included and the optional tests that must be requested. Finally it provides a brief overview of other inspection-related services available from GIPSA.

**11. Inspection Variability** – Discusses the variability associated with grain inspection. It starts with an overview of the sources of variability. It continues with quality control processes used to measure/reduce variability.

**12. Weighing Program** – Provides an overview of the Official weighing program. It covers mandatory weighing for export grain and intercompany inbound barges using Class X procedures and permissive weighing for domestic grain shipments using Class X or Class Y procedures. It also reviews the various types of scales used for official weighing and how they are tested.



## GEAPS 510 — Grain Facilities Planning and Design I

April 13 to May 15

## GEAPS 521 — Aeration System Design and Operational Management

April 13 to May 15

## GEAPS 522 — FGIS Grain Inspection Orientation

June 1 to July 3

## GEAPS 542 — Electrical Safety for Grain and Processing Facilities

April 13 to May 15

### REGISTRATION

Register online at [www.geaps.com](http://www.geaps.com) or use this form and fax/mail to GEAPS (info at bottom).

Select course

GEAPS 510     GEAPS 521     GEAPS 522     GEAPS 542

Registration fee

GEAPS member: \$515     Non-member: \$715

The registration deadline for 510 and 542 is March 23.

The registration deadline for 522 is May 8.

Fax or mail your complete registration to GEAPS (details below).

Fee includes tuition and all class materials (CDs), which will be mailed to students. CDs contain course lectures.

**Cancellation Policy:** Before the class begins, registrant is entitled to a full refund, on condition that they return the CDs at their own expense. Registrants who cancel up to seven days after class begins are entitled to retake the same course the next time it's offered, without charge. No refunds after the class begins. Substitutions allowed at the qualifying fee rate (member or non-member).

Name \_\_\_\_\_

Title \_\_\_\_\_

Company \_\_\_\_\_

Mailing address \_\_\_\_\_

City \_\_\_\_\_ State \_\_\_\_\_ Country \_\_\_\_\_

e-mail \_\_\_\_\_  
REQUIRED

Phone \_\_\_\_\_ Fax \_\_\_\_\_

Fees must be paid at the time of registration.

Payment type:  Check(enclosed)     Credit Card

Payment amount US \$ \_\_\_\_\_

Credit payment:  Am Ex     MC     Visa

Account No. \_\_\_\_\_ Exp. Date \_\_\_\_\_

Name on card (print) \_\_\_\_\_

Signature \_\_\_\_\_



# GEAPS

The Grain Elevator and Processing Society

4248 Park Glen Rd

Minneapolis, MN 55416

(952)928-4640/Fax (952)929-1318

[www.geaps.com](http://www.geaps.com); [info@geaps.com](mailto:info@geaps.com)



Kansas State University





91 new members signed up at Exchange 2009

## New Members

Welcome these new members who joined GEAPS recently.

**Bolded italics** – new student/faculty members at Exchange 2009

*Italics* – new members at the Exchange 2009

### Canadian Prairies

Kevin Chody  
Terry Friesen  
Greg McCulloch  
Justin Paterson  
Steve Penner  
James Stuart  
Paul Urish  
*sponsored by Bob Fryza*

### Cherokee Strip

Jess Andrews  
Kenny Bacon  
Randy Beeby  
Edmond Bonjour

### Cornbelt

Sean Belcher  
Amy Johnson  
Kevin Jones  
Dave McKinley  
Nathan Montgomery  
Eric Morreim  
*sponsored by Steven Morreim*  
Cheryl Osborne  
Skip Shearer

### Gateway

**Brad Arnold**  
Jeff Cogdill  
**Donald Fowlen**  
**Christian Heredia**  
**Keaton Hendrick**  
**Kyle Hendrick**  
**Andrew Kleindienst**  
**Tyler Nordwald**  
**John Schad**  
**Quentin Starkey**  
**Luke Stevens**  
**Joseph Zulovich**

### Golden Triangle

Michael Lackey  
Ken Murphy

### Great Plains

Skip Allen  
*sponsored by Perry Stussy*  
**Keith Behnke**  
**Amanda Brown**  
Mark Casada  
**Travis Dick**  
**Adam Fahrenholz**  
**Laci Heller**  
**Erin Mader**  
**Adrian Martinez-Kawas**  
**Ryan Roberts**  
**Jonathan Wilson**

### Great River

Joe Michel

### Greater Iowa

Jesse Weitl  
Daryl Sauerbrei  
*sponsored by Buzz Tourangeau*

### Gulf South

Daryl Curry  
Rashad Hart  
Wayne Vicknair

### Hoosier

John Barrett  
Gary DeVore  
Lance Falk  
Todd Garber  
Todd Guthrie  
Doug Hartman  
Mike Kiser  
Darrell Melton  
David Selig

### Intermountain

Brett Wilken

### Kansas City

Lloyd Autrey  
Brent Bayliff  
Glen Hofbauer

### Michigan/S. Ontario

Ron Balzer  
Robert Cornelis  
Dan Deloyer  
Brian Fleming  
Mark Hintz  
Willem Karelse  
Gregory Kerrigan  
Arthur Thiel  
Bill Wallace

### Mid-America

Steve Stephens

### Mid-Atlantic

Bruce Callaway  
Kyle Cresswell  
Len Lobaugh  
*sponsored by Scott Kephart*  
Randall Jones

### Mid-South

Chuck Ledbetter  
Jimmy Oglesby  
Kyle Strabala

### Minneapolis

Ralph Burgess  
*sponsored by Bill Amend*  
Marvin Deam  
Steve Meyerhofer  
Rodrigo Martins  
James McCarthy  
Peter Seehusen  
Joel Talsma  
Lisa Viker

### Non-Chapter

Amy Berry  
Scott Bonine  
Lisa Caceras  
Ronald Calloway  
Parag Chheda  
Andy Clemen  
Jeff Dils

David Dohman  
Tony Giubardo  
Greg Hopkins  
Matt Huls  
Ira Jenkins  
Benjamin Kleinhans  
Alan Koenig  
Daniel Lawrence  
Jon Moreland  
Daniel Nord  
Bream Olivier  
Terry Pulver  
John Renteria  
Sam Rosas  
Gustavo Sosa  
Dave Sprinkle  
John Trawick  
Frederick Van Biljon  
Andreas Varnava  
Mark Vogt  
Tate Von Eye  
Louis Vorster  
Ron Wolff  
Demetris Yiasoumis

### Oregon Trail

Tom Spies

### Seaway

Kevin Berger  
Craig Francis  
Larry Kaiser  
Timothy Polman

### Siouxland

Dave Mammenga  
Thomas Sehorn

### Snake River

Tom Jeffries

### Vancouver

Leonard Fontaine



## 2009 Great Lakes Regional Conference Kicks Off Next Month In Indiana

**Wednesday, April 15–Friday, April 17, 2009  
Angola, Ind.**

The 13th Annual Great Lakes Regional Conference is now less than a month away, and GEAPS members in three chapters—along with two districts within the International Association of Operative Millers (IAOM)—are putting the final touches on this yearly joint educational conference and table-top trade show this spring at Pokagon State Park in Indiana.

Some 200 people from five states and the province of Ontario are expected to participate in the show. Three GEAPS chapters—*Michigan-Southern Ontario*, *Seaway* and *Hoosier*—along with two IAOM Districts have again organized this popular regional function.

For more information, or to obtain registration materials, please contact Wayne Bauer at Star of the West Milling Co.

Phone: (989) 652-7026; Fax: (989) 652-6358  
e-mail: wayne.bauer@starofthewest.com



### 2009 Great Lakes Regional Conference Program

#### Wednesday, April 15

The program begins with a Tri-Chapter leadership meeting with the GEAPS International president at 5:30 p.m. A social gathering will be held for everyone in attendance that evening from 7:30–10 p.m.

#### Thursday, April 16

Professor Hollingsworth will address the group at a continental breakfast to begin the day from 7:30–8:45 a.m.

This will be followed by pod sessions that will include five hours of training on Arc Flash ( NFPA – 70E ) issues, along with a session by Emerson Power.

Educational sessions will run concurrently with the pod sessions and cover the following:

- Contractor Safety
- Ethanol Update
- Employee Handbooks
- Dealing with Troubled Employees
- Dryer Efficiency

#### Friday, April 17

The morning educational sessions will address:

- Toshiba Motors
- Energy Audits
- Update of Regulatory Issues
- Safety Programs

There will be an optional golf outing in the afternoon.



#### Chapter Education/Sponsorship Opportunity

The GEAPS/SATRA Bin Entry/Tech Rescue Course Advisory Council is again offering to conduct one- or two-day classes on the topic of Bin Entry & Grain Engulfment Issues at GEAPS chapter meetings. If your chapter is interested in sponsoring a class, contact Council Chair Wayne Bauer of Star of the West Milling at (989) 652-7026. Chapters can make use of EPPI funds for the classes.

One of the engulfment rescue demonstrations by SATRA at Exchange 2009.



### **Cherokee Strip**

The *Cherokee Strip Chapter* met twice in February about developing engulment training. The chapter has joined forces with Oklahoma State University and Astry Vo-Tech to work together on this issue and other agriculture related subjects.

### **Cornbelt**

The *Cornbelt Chapter* held its February meeting on the 7th at the Conklin's Barn Dinner Theatre in Goodfield, Ill. Fifteen couples enjoyed an evening of great food, socializing and entertainment with the lighthearted comedy of the Conklin Barn Theatre Group in "Funny Valentines."

### **Gulf South**

The *Gulf South Chapter* held its December meeting on the 16th at the Belle Terre Country Club in Laplace, La. Twenty-three members and guests were in attendance for a Christmas Luncheon. Networking and socializing were on the agenda as GEAPers relaxed and enjoyed the holiday cheer.

The *Gulf South Chapter* held its January meeting on the 15th at the Belle Terre Country Club in Laplace, La. Twenty-six members and guests enjoyed a social hour followed by a buffet dinner and a presentation on safety sponsored by the *Gulf South's* Cargill member facilities.

The *Gulf South Chapter* held its February meeting on the 19th at the Belle Terre Country Club in Laplace, La. Twenty-two members and guests were in attendance to listen to Carroll Campbell, Roco Rescue, speak on the topic of Confined Space Safety. Everyone enjoyed dinner and an entertaining discussion of confined space regulations and rescue by Roco Rescue, a local professional rescue company. The presentation was sponsored by CHS.

### **Hoosier**

The Hoosier Chapter held its February Fun Night With Spouses on the 10th at the Pastariffic Restaurant in Kokomo, Ind. Twelve members and guests met at the Pastariffic eatery and enjoyed an evening of fun, fellowship, and sharing with all that attended.

### **Kansas City**

The *Kansas City Chapter* held its September meeting on the 2nd at the Lifeline Foods in St. Joseph, Mo. Sixteen members and guests were in attendance to listen to Steve Myers, Lifeline Foods, speak on the topic of Processing and Ethanol.

The *Kansas City Chapter* held its October meeting on the 7th at the Argosy Casino in Riverside, Mo. Twenty-four members and guests

were in attendance to listen to Bill Held and Van Buchanan speak on the topic of Belt and Conveyor Maintenance.

The *Kansas City Chapter* held its November meeting on the 5th at the Argosy Casino in Riverside, Mo. Sixteen members and guests were in attendance to listen to Jerry Cotter, Port of Corpus Christi Authority, speak on the topic of Agro Terrorism Facility Requirements.

The *Kansas City Chapter* held its December meeting on the 13th at the Embassy Suites Hotel in Kansas City, Mo. Fifty-one members and guests attended the Christmas party which featured dinner and dancing. Larry Jackson emceed the evening and presented gifts to all present, compliments of donations received from GEAPS affiliated companies.

The *Kansas City Chapter* held its January meeting on the 6th at the Argosy Casino in Riverside, Mo. Forty-two members and guests were in attendance to listen to Marv Hachmeister, Debruce Grain, speak on the topic of Merchandising Grain in 2009. The chapter also reviewed the upcoming election of officers, discussed "pitch" night and formed a golf committee.

The *Kansas City Chapter* held its February meeting on the 3rd at the Argosy Casino in Riverside, Mo. Seventeen members and guests were in attendance to listen to Tracey Barnes, RCI, speak on the topic of Transportation Identification Laws.

### **Mid-Atlantic**

The Mid-Atlantic Chapter held its February meeting on the 10th at the Heritage Shores Club in Bridgeville, Del. Twenty-four members and guests were in attendance for a presentation on Gearbox 101 led by Bruce Wagner, Area Manager-Northeast Region, Emerson Power Transmission. The chapter also requested officer nominations and awarded a membership milestone pin to Michael Burts of Degesch America.

### **Mid-South**

The *Mid-South Chapter* held its Thirtieth Annual Conference and Equipment Display Feb. 5 at the Brinkley Convention Center in Brinkley, Ark. There were 27 individual exhibits set up at the conference with 65 members and guests in attendance. The conference featured the following topics and speakers: GEAPS International Update by Buzz Tourangeau, (then) International 1st Vice President; Machine Safe Guarding by Dale Innis, Liberty Mutual Group; How to Get the Most Out of Shaft Mounted Speed Reducers by John Ahart, Emerson Power Transmissions; and Basic Lubrication and Lubricant Training by Nick Guerrero, Lubriplate.

The chapter also gave two \$1,000 scholar-

ships in memory of *Mid-South* members Wiley Albright and Conrad Erie to Sara Beth Waller from Hickory Planes, Ark., who is a senior Agriculture major at the University of Arkansas at Monticello; and Anthony Frein III from Brinkley, Ark., who is a junior Ag Business major at Arkansas State University at Jonesboro.

### **Minneapolis**

The *Minneapolis Chapter* met Feb. 4 at the Comfort Inn in Bloomington, Minn. The presentation featured information on the forces acting upon the grain markets, the value of GEAPS memberships and the future of the GEAPS organization. Presenters included Mr. Ron Olson, VP Grain General Mills, Mr. Mark Daniels, Cenex Harvest States and Intl GEAPS President, and Mr. Dave Krejci, Intl GEAPS Executive VP. Over 60 members and associates attended including five students from the University of Minnesota. The chapter has been working (and plans to continue working) to attract students and get them involved and interested in the local GEAPS chapter.

### **North Iowa**

The *North Iowa Chapter* held its September meeting on the 9th at the Hanford Inn in Mason City, Iowa. Fifteen members and guests were in attendance to listen to Don Kester, Schumacher Elevator Co, speak on the topic of Manlift Safety & Maintenance. Don's presentation included Do's and Don'ts for operating a Manlift. He also handed out a Maintenance Checklist.

### **Oregon Trail**

The *Oregon Trail Chapter* held a meeting Feb. 18 at the Moose Lodge in Ogallala, Neb. Twenty-three members and guests were present. State Deputy Fire Marshal Fred Reichert presented pictures and video from the Elevator Explosion in Gothenburg, Neb., and Craig Sandstrom from Nationwide Insurance spoke about elevator cleanliness and daily working conditions. The chapter also announced and approved the 2009 Officers.

### **Vancouver**

The *Vancouver Chapter* held its February meeting on the 17th at the Cheers Restaurant in North Vancouver, British Columbia. Fifty members and guests were in attendance to listen to Miro Gajovic, PCO/Orkin, speak on the topic of Bugs.

### **Wild Goose**

The *Wild Goose Chapter* met Oct. 28 and Jan. 27 to discuss plans for the upcoming Warehouse Workshop on May 14.



Publications Mail Agreement Number: 41508543

# CALENDAR

*The most extensive and up-to-date calendar can be found at the GEAPS Web site.*

## chapters

<b>Canadian Prairies</b>	<b>Kansas City</b>	<b>Seaway</b>
<b>April 20</b> Topic: TBA, location and time: TBA	<b>April 17</b> Associates "Pitch Night"/Officer Elections, Argosy Casino, Kansas City, KS, 5:30 p.m.	<b>April 16-17</b> Great Lakes Regional Conference (see page 30)
<b>Cherokee Strip</b>	<b>Michigan/So. Ontario</b>	<b>Siouxland</b>
<b>April 6</b> Pre-Harvest Safety, La Salsa Restaurant, Enid, OK, noon	<b>April 16-17</b> Great Lakes Regional Conference (see page 30)	<b>March 19</b> Associates Night, location and time: TBA
<b>Gateway</b>	<b>Mid-America</b>	<b>Snake River</b>
<b>April 22</b> Elections, location and time: TBA	<b>April 15</b> Facility Tour: UPRR Harriman Dispatch Center, Harriman Center, Omaha, NE, time: TBD	<b>March</b> Fork-Lift Safety, Lewiston, ID, date, location and time: TBA
<b>Great Plains</b>	<b>Mid-Atlantic</b>	<b>Thunder Bay</b>
<b>April 6</b> Business Continuity Plans and Emergency Response, Ron Gruver, Charles Collins & Mark Whalen, KFSA, Hutchinson, KS, time: TBA	<b>April 14</b> Environmental Issues/Officer Nominations, Heritage Shores Club House, Bridgeville, DE, 6 p.m.	<b>April 9</b> 2nd Supplier's Night & Exposition, location and time: TBA
<b>Greater Nebraska</b>	<b>Mid-South</b>	<b>Tri-State</b>
<b>April</b> Facility Tour, location and date: TBA	<b>April 24</b> Fishing Tournament, location: TBA, 5:30 a.m.	<b>April 14</b> Topic: TBA, Amarillo, TX, location and time: TBA
<b>Gulf South</b>	<b>Minneapolis</b>	<b>Twin Ports</b>
<b>April 24</b> Golf Outing, Belle Terre Country Club, La Place, LA, 11 a.m.	<b>April 1</b> Topic: TBA, Holiday Inn Airport, Bloomington, MN, noon	<b>April 15</b> Topic: TBA, Hammond Steak House, Superior, WI, 5:30 p.m.
<b>Hoosier</b>	<b>Oregon Trail</b>	<b>Vancouver</b>
<b>April 16-17</b> Great Lakes Regional Conference (see page 30)	<b>April 22</b> Grain Handling Equipment, Grain Management, Dryer Maintenance & Safety, Emerson Transmission, The Boone Group, & Ag Dryer, Moose Lodge, Ogallala, NE, 5:30 p.m.	<b>April</b> Topic: TBA, Cheers, North Vancouver, BC, 4 p.m., date: TBD
<b>Inland Empire</b>		<b>Wild Goose</b>
<b>April 9</b> Golf Outing, 10 a.m., location: TBA		<b>April 27</b> Topic: TBA, CWGG, Coulee City, WA, 7 p.m.

